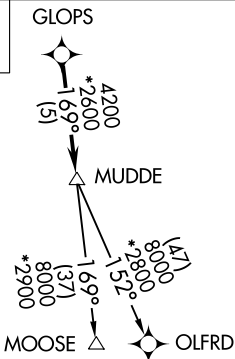
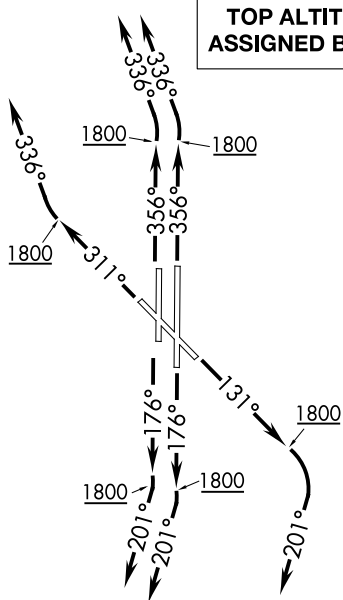


# MUDDE THREE DEPARTURE (RNAV)

**TOP ALTITUDE:  
ASSIGNED BY ATC**



ATIS  
128.725  
GND CON  
121.7  
WILEY POST TOWER★  
126.9 306.9  
OKE CITY DEP CON  
124.6 266.8

**TAKEOFF MINIMUMS:**

Rwy 13, 17L/R, 31, 35L/R:

Standard with minimum climb of 500' per NM to 2100.

- NOTE: RADAR required.
- NOTE: DME/DME/IRU or GPS required.
- NOTE: RNAV 1.

NOTE: Chart not to scale.



### DEPARTURE ROUTE DESCRIPTION

**TAKEOFF RWY 13:** Climb heading 131° to 1800, then right turn heading 201° or as assigned by ATC, expect RADAR vectors to GLOPS, thence . . .

**TAKEOFF RWYS 17L/R:** Climb on heading 176° to 1800, then right turn heading 201° or as assigned by ATC, expect RADAR vectors to GLOPS, thence . . .

**TAKEOFF RWY 31:** Climb on heading 311° to 1800, then right turn heading 336° or as assigned by ATC, expect RADAR vectors to GLOPS, thence . . .

**TAKEOFF RWY 35L/R:** Climb on heading 356° to 1800, then left turn heading 336° or as assigned by ATC, expect RADAR vectors to GLOPS, thence . . .

. . . on track 169° to MUDDE, then on (transition). Maintain 3000 or as assigned by ATC. Expect filed altitude 10 minutes after departure.

**MOOSE TRANSITION (MUDDE3.MOOSE):**

**OLFRD TRANSITION (MUDDE3.OLFRD):**