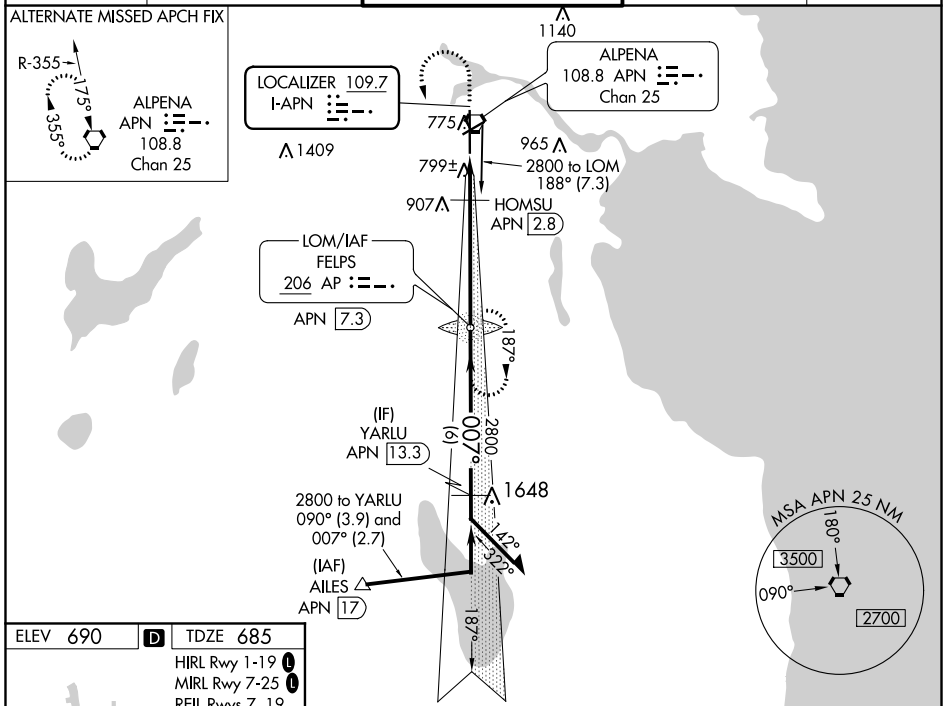


LOC I-APN <b>109.7</b>	APP CRS <b>007°</b>	Rwy Idg TDZE Apt Elev	<b>9001</b> <b>685</b> <b>690</b>
---------------------------	------------------------	-----------------------------	---

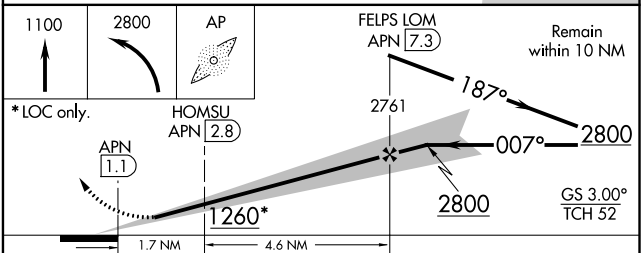
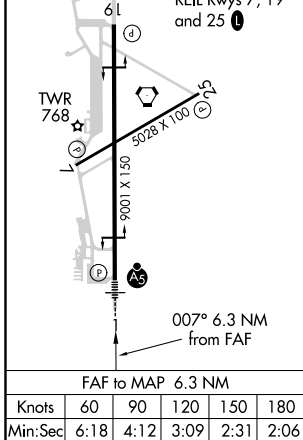
**ILS or LOC RWY 1**  
ALPENA COUNTY RGNL (APN)

ADF required.	MALSR 	MISSED APPROACH: Climb to 1100 then climbing left turn to 2800 direct AP LOM and hold.
 For inop ALS, increase S-LOC 1 Cat C/D visibility to 1 1/2 SM.		

ASOS <b>120.675</b>	ALPENA APP CON * <b>128.425 379.3</b>	ALPENA TOWER * <b>121.35 (CTAF) 318.1</b>	GND CON <b>121.9 275.8</b>	UNICOM <b>122.95</b>
------------------------	--	--	-------------------------------	-------------------------



ELEV <b>690</b>	<b>D</b>	TDZE <b>685</b>
HIRL Rwy 1-19		
MIRL Rwy 7-25		
REIL Rwy 7, 19 and 25		



CATEGORY	A	B	C	D
S-ILS 1	885-1/2 200 (200-1/2)			
S-LOC 1	1260-1/2	575 (600-1/2)	1260-1 1/4	575 (600-1 1/4)
HOMSU FIX MINIMUMS				
S-LOC 1	1140-1/2 455 (500-1/2)			

EC-1, 09 SEP 2021 to 07 OCT 2021

EC-1, 09 SEP 2021 to 07 OCT 2021