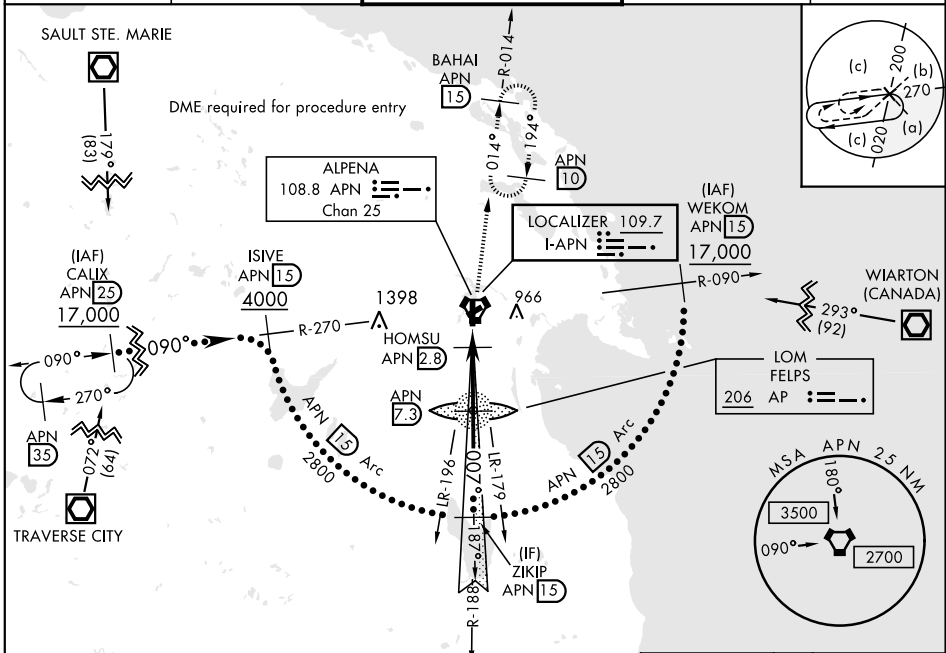


HI-ILS or LOC RWY 1

LOC I-APN 109.7	APCH CRS 007°	Rwy ldg TDZE Arprt Elev 9001 685 690	JAL-718 [USAF]	ALPENA COUNTY RGNL (KAPN)
* When ALS inop, increase vis to ¾ mile. ** When ALS inop, increase vis to 1 ½ miles.		MALSR 	MISSED APPROACH: Climb to 1300, then climbing right turn to 5000 on APN VORTAC R-014 to BAHAI/15 DME and hold. Continue climb-in-hold to 5000.	

ASOS 120.675	ALPENA APP CON 128.425 379.3	ALPENA TOWER ★ 121.35 (CTAF) 0 318.1	GND CON 121.9 275.8	UNICOM 122.95
------------------------	--	--	-------------------------------	-------------------------

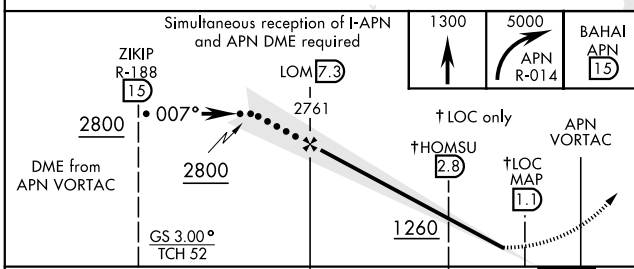


EC-1, 09 SEP 2021 to 07 OCT 2021

EC-1, 09 SEP 2021 to 07 OCT 2021

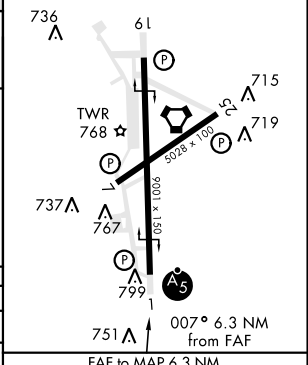
DME REQUIRED

EMERG SAFE ALT 100 NM 4000



ELEV 690	TDZE 685
HIRL Rwy 1-19	MIRL Rwy 7-25
REIL Rwy 7-25, 19	

CATEGORY	C	D	E
S-ILS 1*	885-½	200	(200-½)
S-LOC 1**	1140-7/8	455	(500-7/8)
CIRCLING	1220-1½	1280-2	1320-2¼
	530 (600-1½)	590 (600-2)	630 (700-2¼)



FAF to MAP 6.3 NM					
Knots	120	140	160	180	200
Min:Sec	3:09	2:42	2:22	2:06	1:53

HI-ILS or LOC RWY 1