

VORTAC TTH <b>115.3</b> Chan <b>100</b>	APP CRS <b>229°</b>	Rwy Idg TDZE Apt Elev	<b>9020</b> <b>582</b> <b>589</b>
-----------------------------------------------	------------------------	-----------------------------	-----------------------------------------

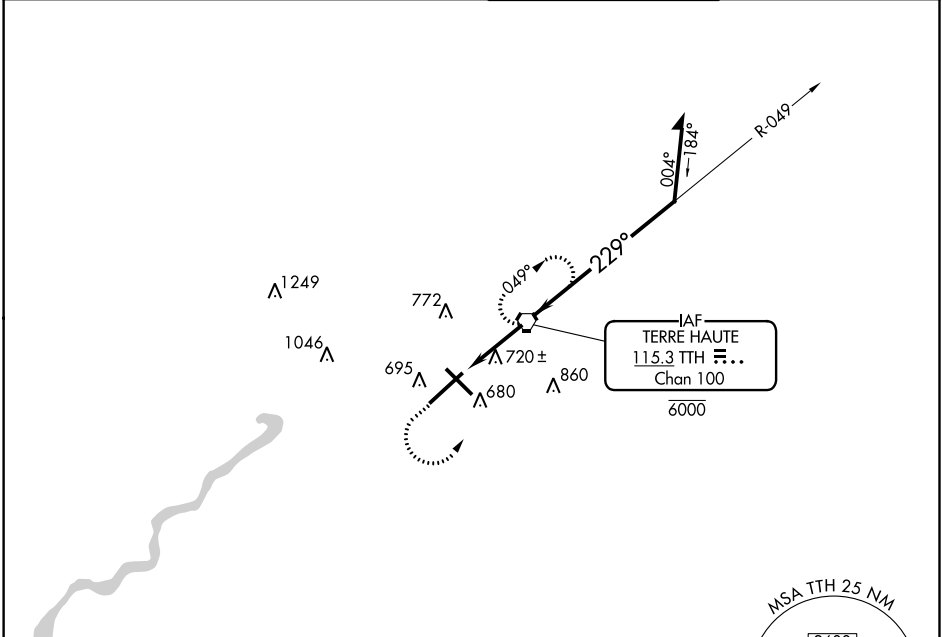
# VOR RWY 23

TERRE HAUTE RGNL (HUF)

**⚠** VDP NA when using Paris, IL altimeter setting. When local altimeter setting not received, use Paris, IL altimeter setting and increase all MDA 80 feet, increase S-23 and Circling Cats C/D visibilities ¼ mile. Rwy 23 helicopter visibility reduction below ¾ SM NA.

**MISSED APPROACH:** Climb to 2300 then left turn direct TTH VORTAC and hold.

ATIS <b>127.5 269.375</b>	HULMAN APP CON <b>125.45 339.8</b>	HULMAN TOWER <b>134.725 239.0</b>	GND CON <b>121.6 348.6</b>
------------------------------	---------------------------------------	--------------------------------------	-------------------------------



EC-2, 09 SEP 2021 to 07 OCT 2021

EC-2, 09 SEP 2021 to 07 OCT 2021

ELEV <b>589</b>	<b>D</b>	TDZE <b>582</b>
-----------------	----------	-----------------

REIL Rwy 14, 23 and 32  
HIRL Rwy 5-23 and 14-32

FAF to MAP 3 NM					
Knots	60	90	120	150	180
Min:Sec	3:00	2:00	1:30	1:12	1:00

2300	TTH	TTH VORTAC	Remain within 10 NM
2400	049°	229°	1600
3.02°	TCH 50	1.1	1.9 NM

CATEGORY	A	B	C	D
S-23	1000-1		418 (500-1)	
<b>C</b> CIRCLING	1040-1	451 (500-1)	1220-1¾ 631 (700-1¾)	1220-2 631 (700-2)