

WAAS CH <b>53704</b> W05A	APP CRS <b>046°</b>	Rwy Idg TDZE Apt Elev	<b>6000</b> <b>575</b> <b>583</b>
---------------------------------	------------------------	-----------------------------	---

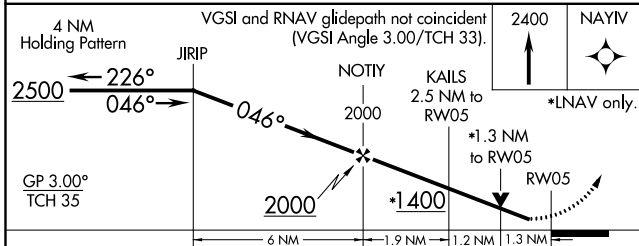
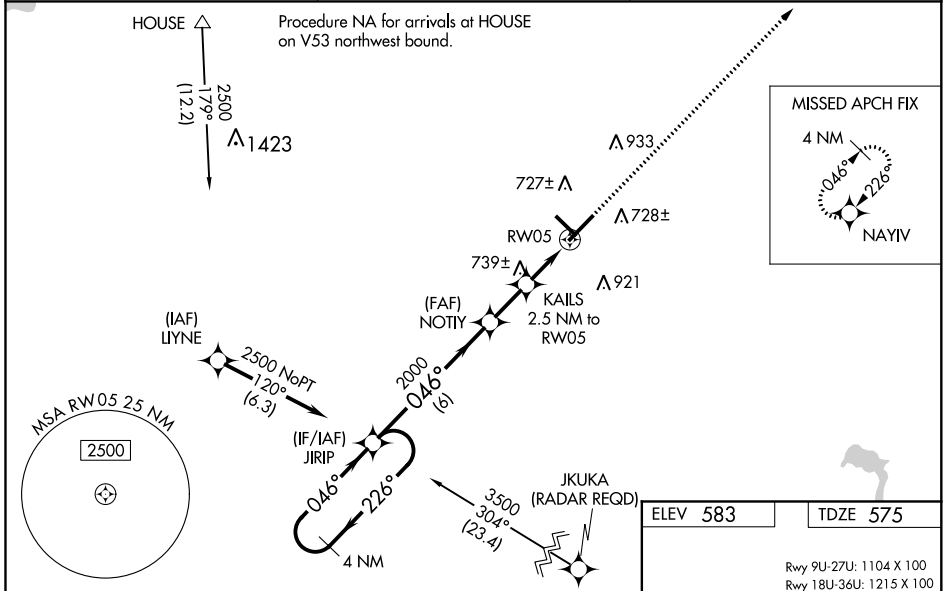
# RNAV (GPS) RWY 5

FREEMAN MUNI (SE,R)

**NA** Baro-VNAV NA when using Louisville Muhammad Ali Intl altimeter setting. For uncompensated Baro-VNAV systems, LNAV/VNAV NA below -16°C (4°F) or above 54°C (130°F). When local altimeter setting not received, use Louisville Muhammad Ali Intl altimeter setting and increase all DA 117 feet and all MDA 120 feet; increase LPV all Cats visibility 3/8 mile, LNAV/VNAV all Cats and Circling Cat C/D visibility 1/2 mile and LNAV Cat C/D visibility 1/4 mile. For inoperative ODALS, increase LNAV/VNAV all Cats visibility to 1 1/2 miles and LNAV Cat C/D visibility to 1 1/4 miles. DME/DME RNP-0.3 NA. VDP NA with Louisville Muhammad Ali Intl altimeter setting. For inoperative ODALS when using Louisville Muhammad Ali Intl altimeter setting, increase LNAV/VNAV all Cats visibility to 2 miles and LNAV Cat C/D visibility to 1 1/2 miles. Helicopter visibility reduction below 3/4 SM NA.

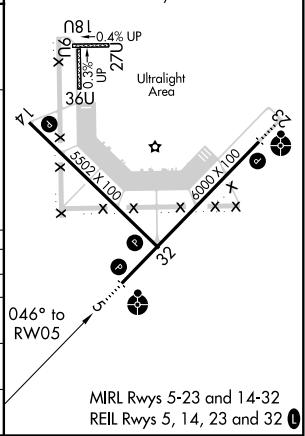
**ODALS** MISSED APPROACH: Climb to 2400 direct NAYIV and hold.

AWOS-3 <b>119.425</b>	INDIANAPOLIS CENTER <b>124.775 269.45</b>	UNICOM <b>122.8 (CTAF)</b>
--------------------------	--	-------------------------------



ELEV 583	TDZE 575
----------	----------

Rwy 9U-27U: 1104 X 100  
Rwy 18U-36U: 1215 X 100



CATEGORY	A	B	C	D
LPV DA		825-3/4	250 (300-3/4)	
LNAV/VNAV DA		1020-1 3/8	445 (500-1 1/2)	
LNAV MDA	1000-3/4	425 (500-3/4)	1000-1 1/8	425 (500-1 1/2)
CIRCLING	1040-1 457 (500-1)	1080-1 497 (500-1)	1300-2 717 (800-2)	1300-2 1/4 717 (800-2 1/4)

EC-2, 09 SEP 2021 to 07 OCT 2021

EC-2, 09 SEP 2021 to 07 OCT 2021