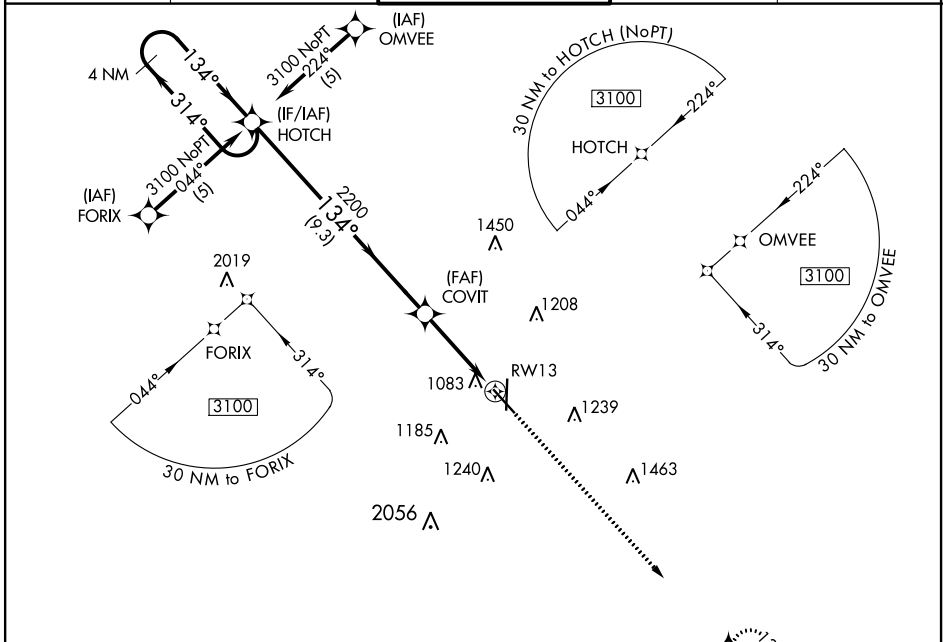


WAAS CH <b>90109</b> <b>W13A</b>	APP CRS <b>134°</b>	Rwy Idg <b>5813</b> TDZE <b>968</b> Apt Elev <b>978</b>
--	------------------------	---

# RNAV (GPS) RWY 13

JOPLIN RGNL (JLN)

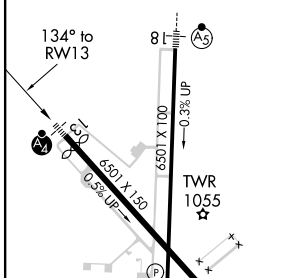
RNP APCH.		MALSF	MISSED APPROACH: Climb to 3100 direct HOVIL and hold.	
MALSF (NSTD) 1368'. Baro-VNAV NA below -16°C (4°F). For inop MALSF, increase LPV Cats A/B/C visibility to 1.				
ATIS <b>120.85</b>	KANSAS CITY CENTER <b>128.6 282.325</b>	JOPLIN TOWER* <b>119.8 (CTAF) 0</b>	GND CON <b>121.6</b>	UNICOM <b>122.95</b>



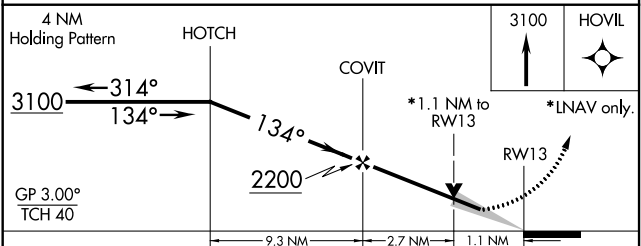
NC-3, 09 SEP 2021 to 07 OCT 2021

NC-3, 09 SEP 2021 to 07 OCT 2021

ELEV 978	<b>D</b>	TDZE 968
----------	----------	----------



HIRL Rwy 13-31	HIRL Rwy 18-36
----------------	----------------



CATEGORY	A	B	C	D
LPV DA	1220-¾	252 (300-¾)		1220-1 252 (300-1)
LNAV/VNAV DA	1380-1¼	412 (400-1¼)		1380-1½ 412 (400-1½)
LNAV MDA	1340-¾	372 (400-¾)		1340-1 372 (400-1)
<b>C</b> CIRCLING	1500-1½	522 (600-1½)	1540-1½ 562 (600-1½)	1600-2 622 (700-2)