

# TACAN RWY 22

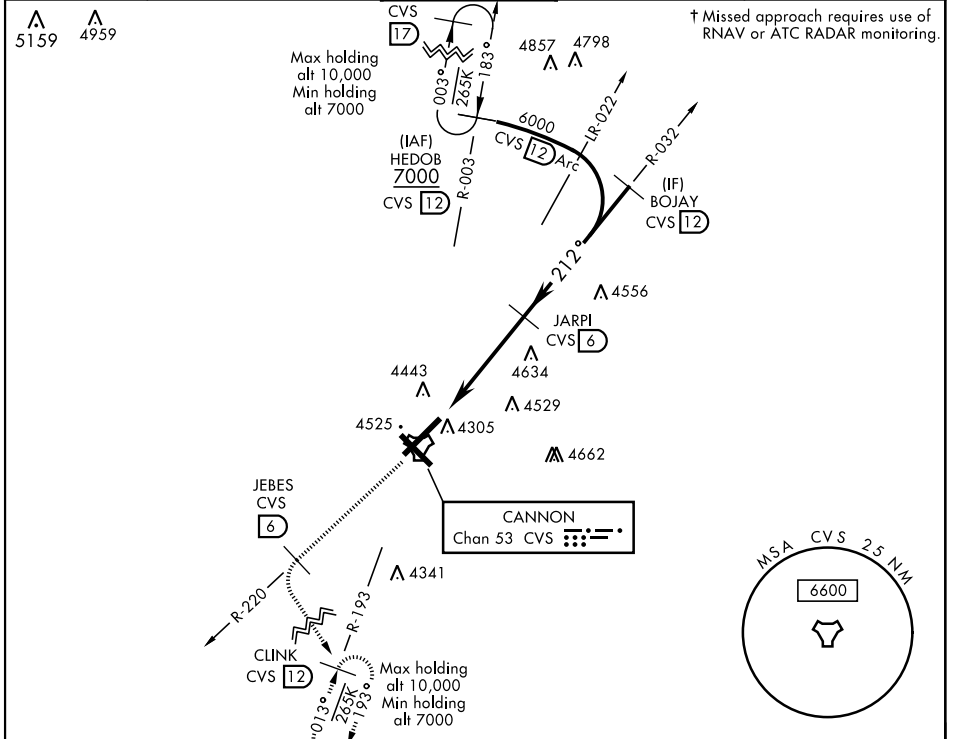
TACAN CVS Chan <b>53</b>	APCH CRS <b>212°</b>	Rwy Idg <b>10,003</b> TDZE <b>4295</b> Arprt Elev <b>4295</b>
-----------------------------	-------------------------	---

AL-512 [USAF]

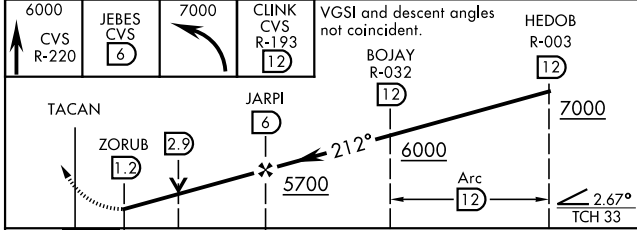
CANNON AFB (KCVS)


⚠ \*When ALS inop, increase CAT AB RVR to 55 and vis to 1 mile, increase CAT CDE vis to 1¼ miles.
ALSF-1 
† MISSED APPROACH: Climb to 6000 out CVS TACAN R-220 to 6 DME (JEBES) then climbing left turn to 7000 intercept CVS R-193 to 12 DME (CLINK) and hold.

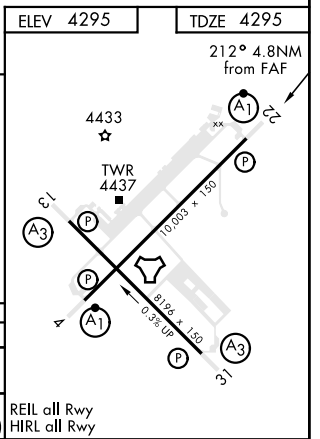
ATIS <b>119.1 269.9</b>	CANNON APP CON <b>118.425 352.1</b>	CANNON TOWER <b>120.4 270.25</b>	GND CON <b>121.9 275.8</b>	CLNC DEL <b>120.2 293.225</b>
----------------------------	--	-------------------------------------	-------------------------------	----------------------------------



EMERG SAFE ALT 100 NM 9000	6000 CVS R-220	JEBES CVR 6	7000	CLINK CVR 12	VGSI and descent angles not coincident.	HEDOB R-003
----------------------------	----------------	-------------	------	--------------	---	-------------



CATEGORY	A	B	C	D	E
S-22 *	4900/24	605 (700-½)	4900-1¾	605 (700-1¾)	
 CIRCLING	4900-1	605 (700-1)	4900-1¾ 605 (700-1¾)	5000-2¼ 705 (800-2¼)	5020-2½ 725 (800-2½)



# TACAN RWY 22

SW-1, 09 SEP 2021 to 07 OCT 2021

SW-1, 09 SEP 2021 to 07 OCT 2021

REIL all Rwy  
HIRL all Rwy