

TACAN RWY 32L

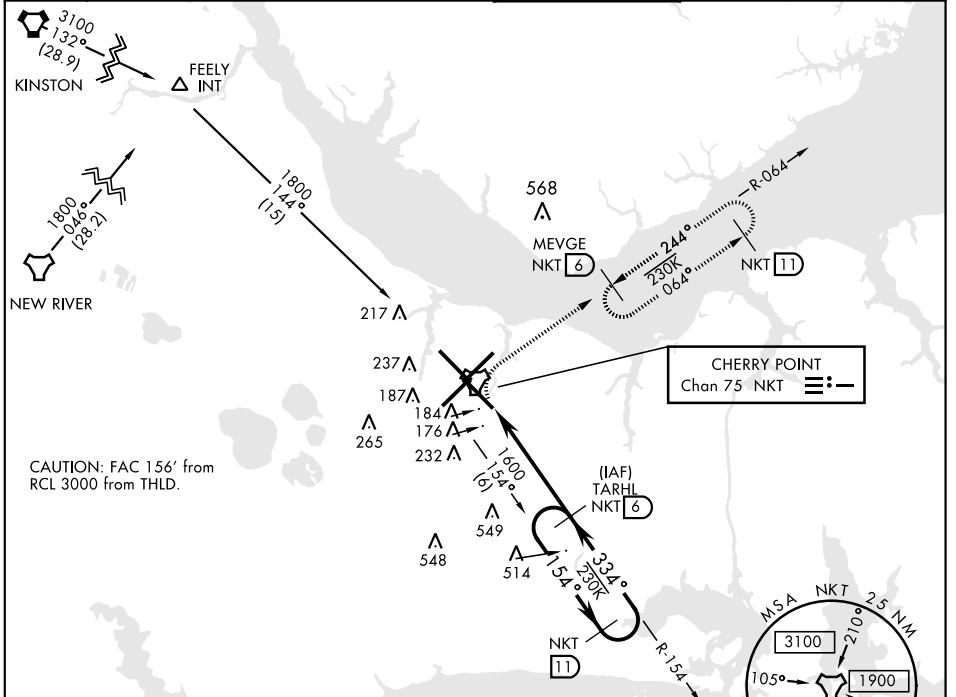
TACAN NKT Chan 75	APCH CRS 334°	Rwy ldg TDZE Arprt Elev 7551 26 29	AL-471 [USN]	CHERRY POINT MCAS (CUNNINGHAM FLD) (KNKT)
-----------------------------	-------------------------	--	--------------	---

▼ * When ALS inop, increase vis CAT AB to 1 mile, CAT CD to 1 3/8 miles.

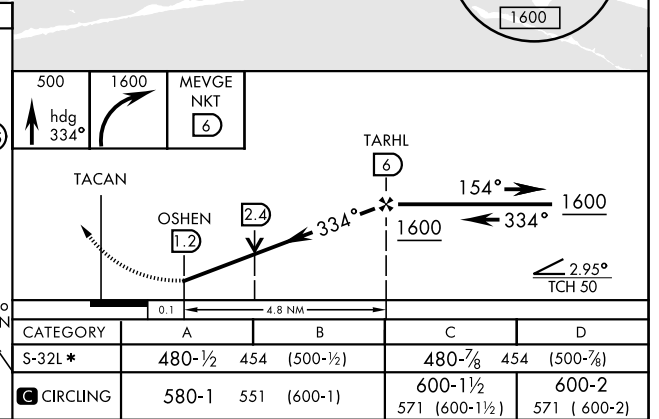
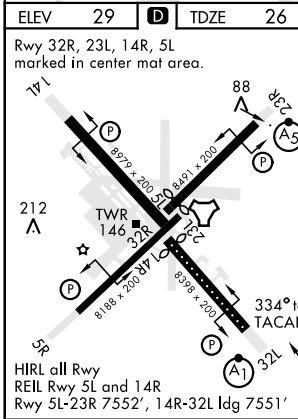
ALSF-1

MISSED APPROACH: Climb on hdg 334°. At 500 climbing right turn to 1600 direct MEVGE and hold.

ATIS 127.475 244.875	CHERRY POINT APP CON (E) 119.75 360.775 (abv 2600') (E) 132.575 299.6 (at/blw 2600') (W) 119.35 377.175 (N) 124.1 268.7	CHERRY POINT TOWER 121.3 340.2	GND CON 128.625 239.025	CLNC DEL 125.95 316.125	ASR/ PAR
--	--	---	---	---	-------------



EMERG SAFE ALT 100 NM 4100



TACAN RWY 32L

SE-2, 09 SEP 2021 to 07 OCT 2021

SE-2, 09 SEP 2021 to 07 OCT 2021