

LOC I-ALW <b>111.7</b>	APP CRS <b>196°</b>	Rwy ldg <b>6527</b> TDZE <b>1194</b> Apt Elev <b>1194</b>
---------------------------	------------------------	---

# ILS Z or LOC/DME RWY 20

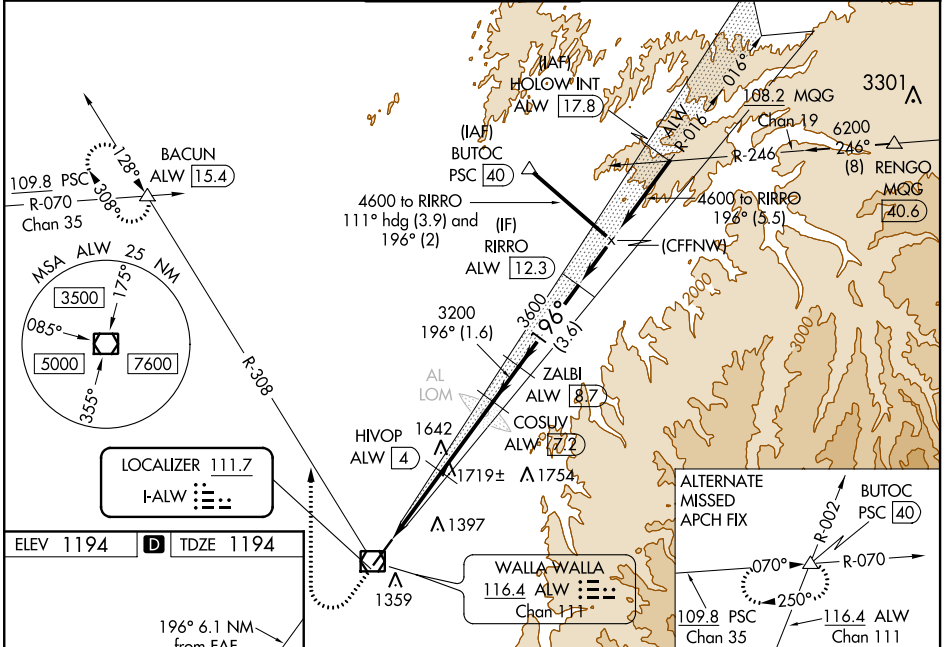
WALLA WALLA RGNL (ALW)

**▼** DME required. When local altimeter setting not received, use Pendleton altimeter setting and increase all DA and all MDA 120 feet, increase S-ILS 20 visibility to RVR 3200, increase S-LOC 20 Cat A visibility 3/8 mile, Cat C and D visibility 1/4 mile and Circling Cat A and C/D visibility 1/4 mile. VDP NA when using Pendleton altimeter setting. For inoperative MALSRS, when using Pendleton altimeter setting, increase S-ILS 20 all Cats visibility to 5000 RVR. DME from ALW VOR/DME. Simultaneous reception of I-ALW and ALW VOR/DME required. For inoperative MALSRS, increase S-LOC 20 Cat C/D visibility 3/4 mile. # RVR 1800 authorized with use of FD or AP or HUD to DA.



**MALSRS**  
MISSED APPROACH: Climb to 1800 then climbing right turn to 4000 on heading 340° and ALW VOR/DME R-308 to BACUN INT/ALW 15.4 DME and hold.

ASOS <b>135.875</b>	CHINOOK APP CON * <b>133.15 379.15</b>	WALLA WALLA TOWER * <b>118.5 (CTAF) 289.4</b>	GND CON <b>121.6 289.4</b>	UNICOM <b>122.95</b>
------------------------	---	--	-------------------------------	-------------------------



NW-1, 09 SEP 2021 to 07 OCT 2021

