

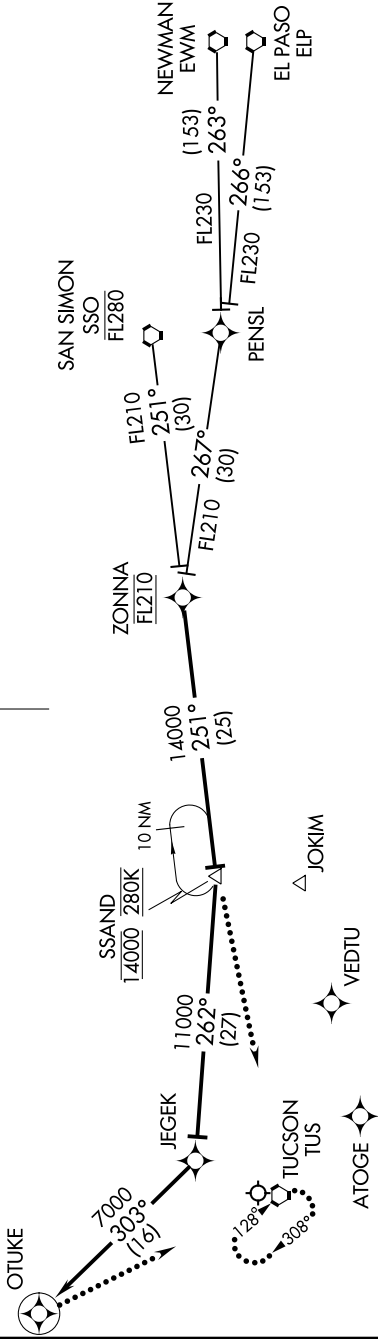
# ZONNA ONE ARRIVAL (RNAV)

AL-430 (FAA)

TUCSON INTL (TUS)  
TUCSON, ARIZONA

SW-4, 09 SEP 2021 to 07 OCT 2021

ATIS 123.8 279.65  
 TUCSON APP CON 119.4 318.1  
 TUCSON TOWER 118.3 257.8  
 GND CON 124.4 348.6



### ARRIVAL ROUTE DESCRIPTION

EL PASO TRANSITION (ELP.ZONNA1)  
NEWMAN TRANSITION (EWM.ZONNA1)  
SAN SIMON TRANSITION (SSO.ZONNA1)

From ZONNA via 251° track to SSAND, cross SSAND at 14000 and 280K, then via 262° track to JEGEK, then via 303° track to OTUKE. Expect radar vectors to final approach course.

### LOST COMMUNICATIONS

RWY 29R: At SSAND proceed direct TUS VORTAC and hold, maintain 14000.  
 RWY 11L: Execute RNAV (GPS) Z RWY 11L approach. If unable, at OTUKE proceed direct TUS VORTAC and hold, maintain 14000.

- NOTE: RADAR required.
- NOTE: All Rwys: expect radar vectors to final approach.
- NOTE: RNAV 1.
- NOTE: DME/DME/IRU, or GPS required.
- NOTE: For turbojets only.
- NOTE: All transitions: for non-GPS equipped aircraft DUG, TFD, and TUS must be operational.
- NOTE: Landing Rwy 29: Expect radar vectors after SSAND to final approach course.

NOTE: Chart not to scale.

# ZONNA ONE ARRIVAL (RNAV)

TUCSON, ARIZONA  
TUCSON INTL (TUS)

SW-4, 09 SEP 2021 to 07 OCT 2021