

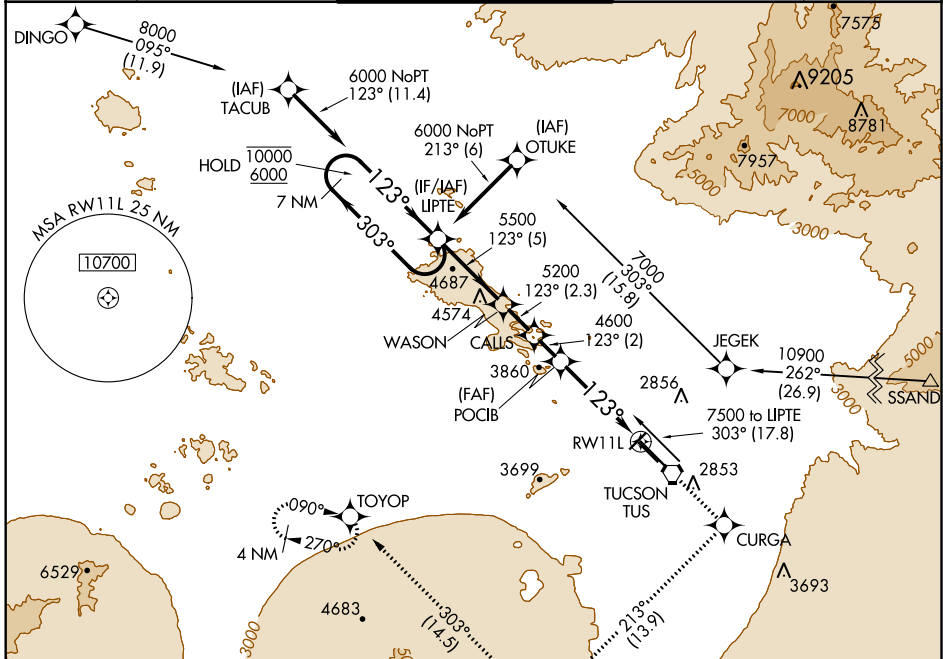
WAAS CH <b>82701</b> <b>W11A</b>	APP CRS <b>123R</b>	Rwy Idg <b>10996</b> TDZE <b>2599</b> Apt Elev <b>2643</b>
--	------------------------	--

# RNAV (GPS) Z RWY 11L

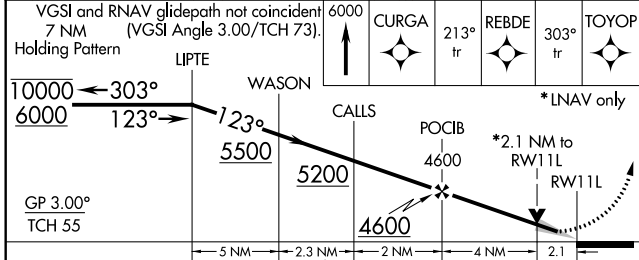
TUCSON INTL (TUS)

RNP APCH: ▼ For uncompensated Baro-VNAV systems, LNAV/VNAV NA below -3°C or above 52°C. For inoperative ALS, increase LNAV/VNAV all Cats to RVR 5500 and increase LNAV Cat C, D and E visibilities to 2 SM.	MALSR 	MISSED APPROACH: Climb to 6000 (Cat E 8000) direct CURGA and on 213° track to REBDE and on 303° track to TOYOP and hold.
--	-----------	--

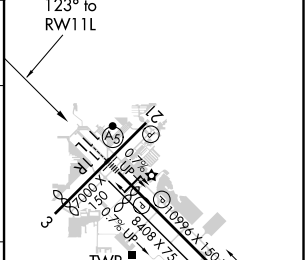
ATIS <b>123.8 279.65</b>	TUCSON APP CON <b>119.4 318.1</b>	TUCSON TOWER <b>118.3 257.8</b>	GND CON <b>124.4 348.6</b>	CLNC DEL <b>126.65 326.2</b>
-----------------------------	--------------------------------------	------------------------------------	-------------------------------	---------------------------------



VGSI and RNAV glidepath not coincident 7 NM (VGSI Angle 3.00/TCH 73). Holding Pattern	LIPT E	WASON	CALLS	POCIB	REBDE	TOYOP
---	--------	-------	-------	-------	-------	-------



ELEV 2643	TDZE 2599
-----------	-----------



CATEGORY	A	B	C	D	E
LPV DA	2849/24		250 (300-½)		
LNAV/VNAV DA	2967/40		368 (400-¾)		
LNAV MDA	3320-24	721 (700-½)	3320-1½	721 (700-1%)	3320-1¾ 721 (700-1¾)
CIRCLING	3320-1	677 (700-1)	3320-2 677 (700-2)	3660-3 1017(1100-3)	3920-3 1277(1300-3)

HIRL Rwy 11L-29R  
MIRL Rwy 3-21 and 11R-29L  
REIL Rwy 21, 29L and 29R

SW-4, 09 SEP 2021 to 07 OCT 2021

SW-4, 09 SEP 2021 to 07 OCT 2021