

# TACAN Y RWY 12

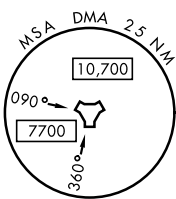
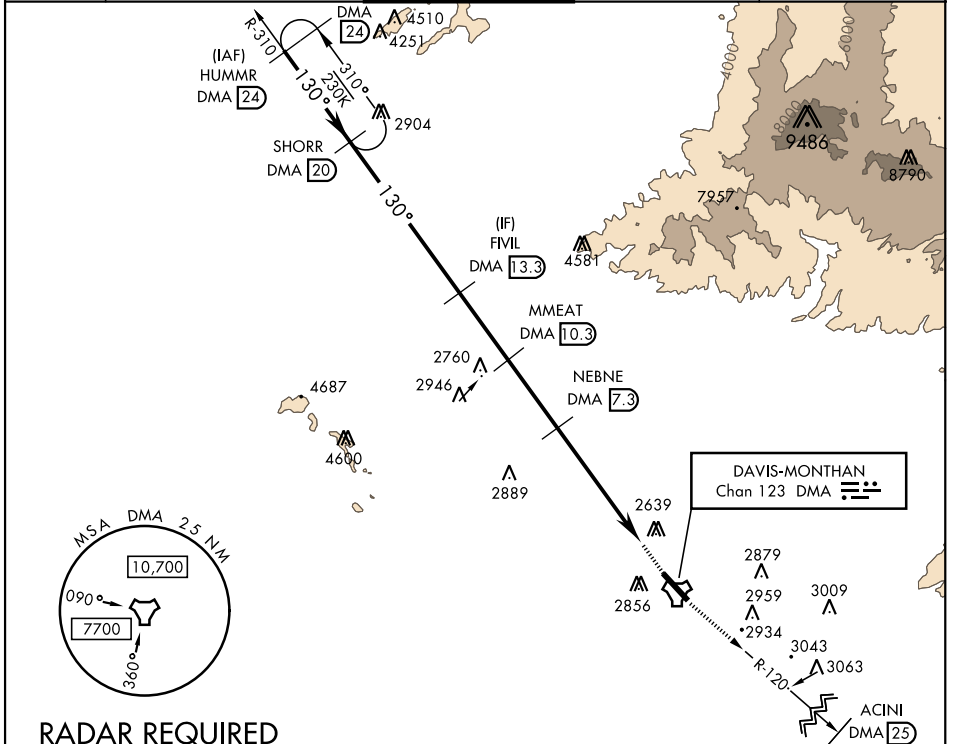
DAVIS-MONTHAN AFB (KDMA)

TACAN DMA Chan <b>123</b>	APCH CRS <b>130°</b>	Rwy Idg <b>13,643</b> TDZE <b>2615</b> Arprt Elev <b>2704</b>
------------------------------	-------------------------	---

AL-429 [USAF]

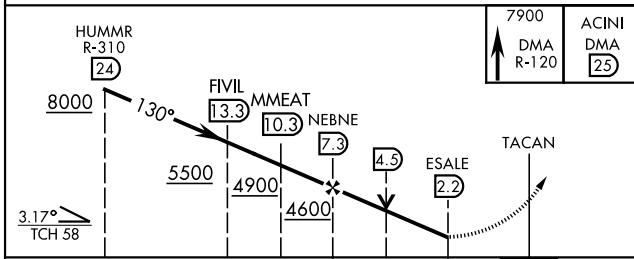
**▼** \*Circling not authorized S of Rwy 12-30. MISSED APPROACH: Climbing to 7900 intercept DMA TACAN R-120 to ACINI. Expect RADAR vectors.

ATIS ★ <b>270.1</b>	TUCSON APP CON 090°-285° <b>125.1 269.55</b> 286°-089° <b>119.4 318.1</b>	DAVIS-MONTHAN TOWER <b>118.85 253.5</b>	GND CON <b>121.8 275.8</b>	CLNC DEL <b>121.8 275.8</b>
------------------------	---	--	-------------------------------	--------------------------------



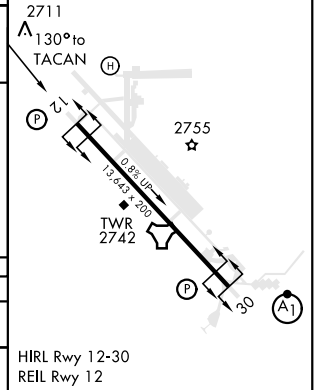
## RADAR REQUIRED

EMERG SAFE ALT 100 NM 17,200



ELEV 2704	TDZE 2615
-----------	-----------

CATEGORY	A	B	C	D	E
S-12	3600/60 985 (900-1¼)	3600-1½ 985 (900-1½)	3600-3	985	(900-3)
<b>CIRCLING*</b>	3600-1¼ 896 (900-1¼)	3600-1½ 896 (900-1½)		3600-3 896 (900-3)	



# TACAN Y RWY 12

SW-4, 09 SEP 2021 to 07 OCT 2021

SW-4, 09 SEP 2021 to 07 OCT 2021