

TUCSON, ARIZONA

# ILS or LOC Y RWY 30

LOC I-DMA <b>109.3</b>	APCH CRS <b>305°</b>	Rwy Ldg <b>13,643</b> TDZE <b>2704</b> Arprt Elev <b>2704</b>
---------------------------	-------------------------	--

AL-429 [USAF]

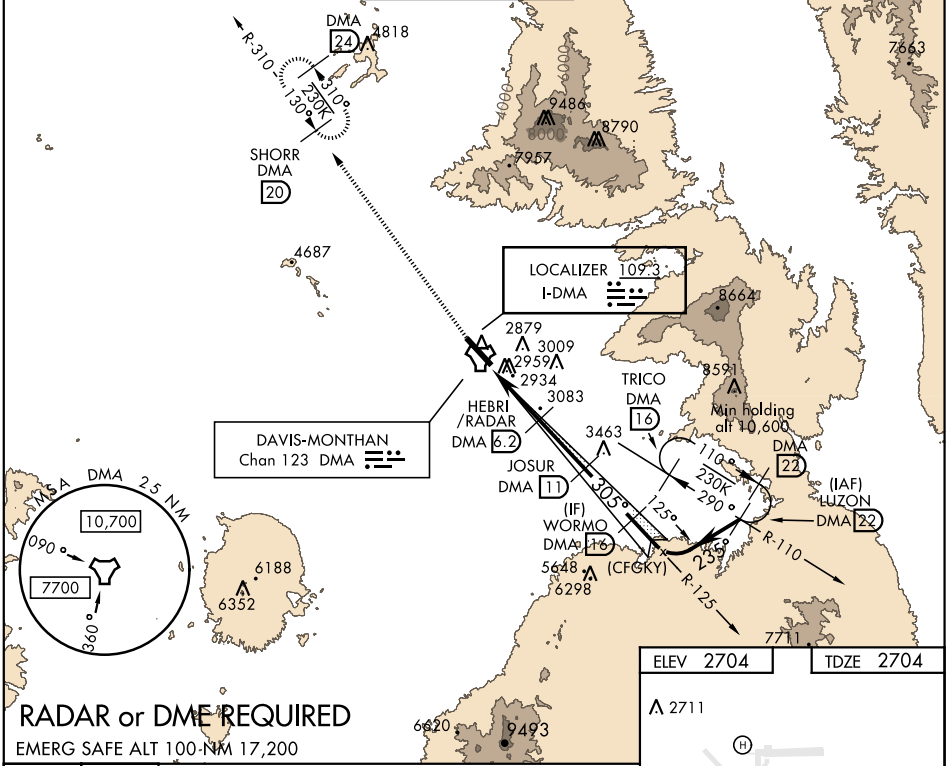
DAVIS-MONTHAN AFB (KDMA)

▼ \* When ALS inop, increase CAT AB RVR to 55, vis to 1 mile; CAT CDE vis to 1 1/4 miles.  
\*\* Circling not authorized S of Rwy 12-30.



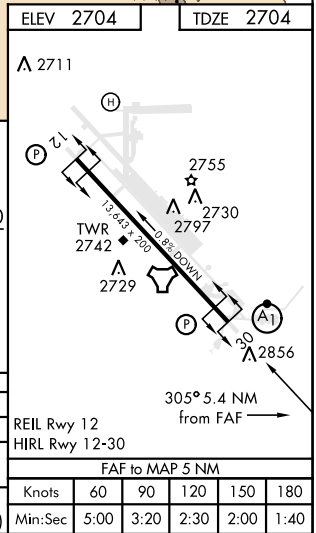
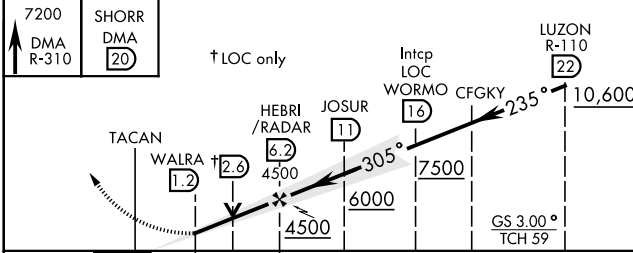
MISSED APPROACH: Climb to 7200, intercept DMA TACAN R-310 to SHORR and hold.

ATIS★ <b>270.1</b>	TUCSON APP CON 066°-274° <b>119.4 318.1</b> 275°-065° <b>125.1 269.55</b>	DAVIS-MONTHAN TOWER <b>118.85 253.5</b>	GND CON <b>121.8 275.8</b>	CLNC DEL <b>121.8 275.8</b>
-----------------------	---	--	-------------------------------	--------------------------------



## RADAR or DME REQUIRED

EMERG SAFE ALT 100-NM 17,200



CATEGORY	A	B	C	D	E
S-ILS 30	2954/40		250 (300-3/4)		
S-LOC 30 *	3340/24	636 (700-1/2)	3340-1 1/8	636 (700-1 1/8)	
CIRCLING **	3340-1	636 (700-1)	3340-1 1/4	3360-2	3440-2 1/2
			636 (700-1 1/4)	656 (700-2)	736(800-2 1/2)

REIL Rwy 12	FAF to MAP 5 NM					
HIRL Rwy 12-30	FAF to MAP 5 NM					
	Knots	60	90	120	150	180
	Min:Sec	5:00	3:20	2:30	2:00	1:40

TUCSON, ARIZONA

32°10'N-110°53'W

DAVIS-MONTHAN AFB (KDMA)

Amdt 8 28MAR19

# ILS or LOC Y RWY 30

SW-4, 09 SEP 2021 to 07 OCT 2021

SW-4, 09 SEP 2021 to 07 OCT 2021