

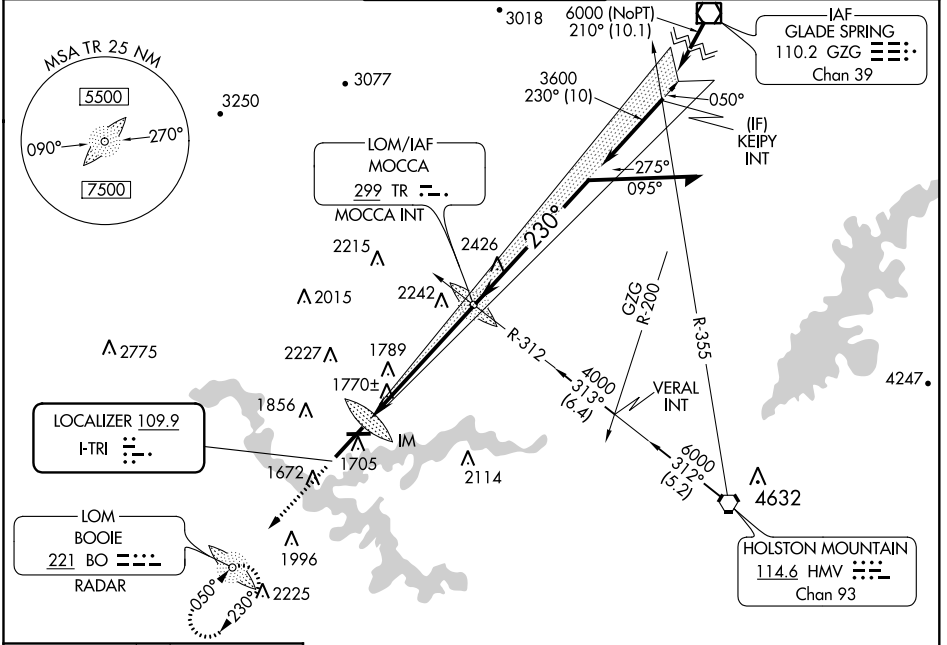
LOC I-TRI 109.9	APP CRS 230°	Rwy Idg TDZE Apt Elev	8000 1518 1519
---------------------------	------------------------	-----------------------------	---

ILS RWY 23 (CAT II)

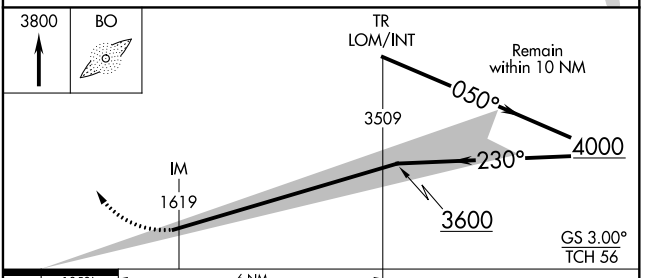
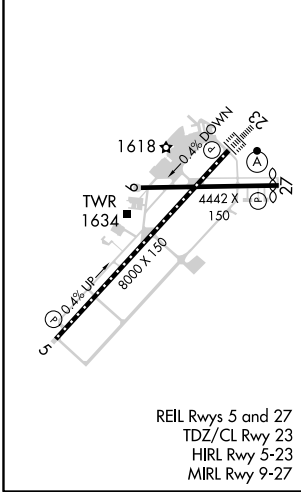
TRI-CITIES (TRI)

ADF or RADAR required.	ALSF-2 	MISSED APPROACH: Climb to 3800 direct BOOIE LOM/ RADAR and hold.
CAUTION: Air traffic control tower 1 634 feet MSL located 940 feet right of runway centerline 357 feet from runway threshold. Procedure NA when tower closed.		

ATIS 118.25	TRI-CITY APP CON ★ 134.425 349.0	TRI-CITY TOWER ★ 119.5 (CTAF) 257.8	GND CON 121.7 348.6	UNICOM 122.95
-----------------------	--	---	-------------------------------	-------------------------



ELEV 1519	D	TDZE 1518
-----------	----------	-----------



1050'	6 NM			
CATEGORY	A	B	C	D
S-ILS 23	RA 139/12 100 DA 1618			

CATEGORY II ILS - SPECIAL AIRCREW & AIRCRAFT CERTIFICATION REQUIRED

SE-1, 09 SEP 2021 to 07 OCT 2021

SE-1, 09 SEP 2021 to 07 OCT 2021