

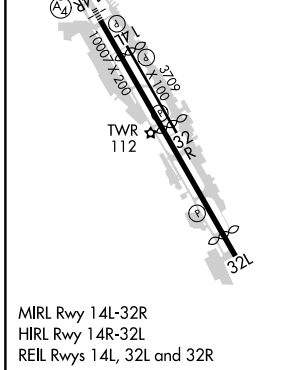
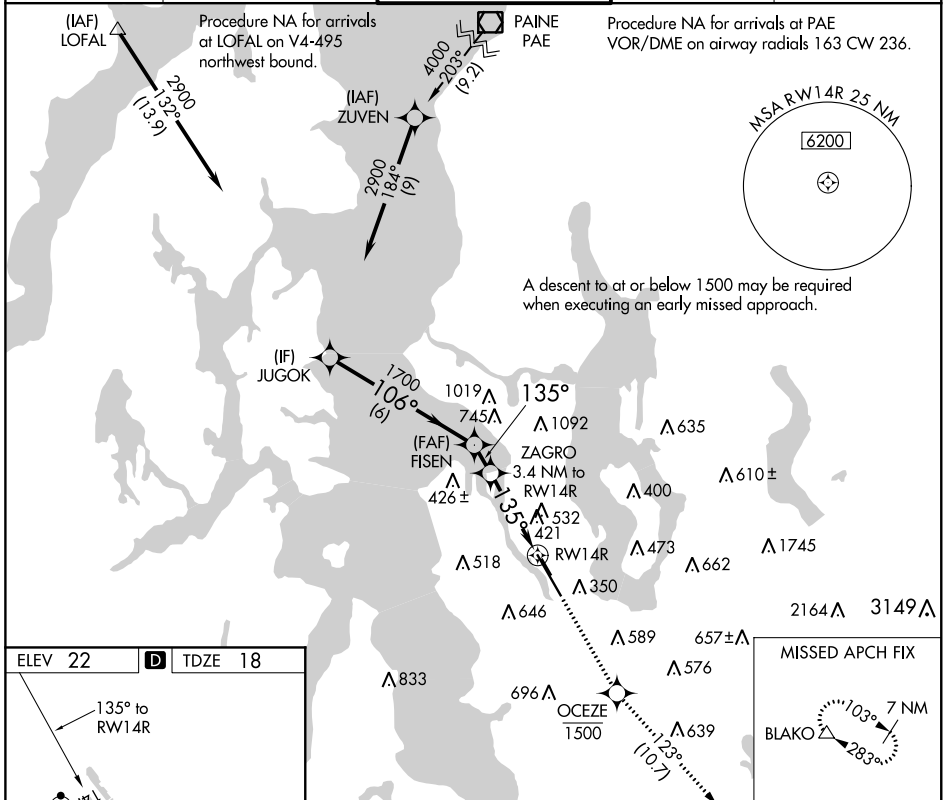
APP CRS	Rwy Idg	<b>9120</b>
<b>135°</b>	TDZE	<b>18</b>
	Apt Elev	<b>22</b>

# RNAV (GPS) Y RWY 14R

BOEING FLD/KING COUNTY INTL (BFI)

RNP APCH-GPS	MALSF	MISSED APPROACH: Climb direct OCEZE, cross OCEZE at or below 1500, then climb to 6400 on track 123° to BLAKO and hold, continue climb-in-hold to 6400.
<p>▼ Circling NA for Cats C and D northeast of Rwy 14L-32R. For inop ALS, increase LNAV Cat C and D visibility to 1½ SM. Rwy 14R helicopter visibility below RVR 4000 NA. Circling Rwy 32R NA at night.</p>		

ATIS	SEATTLE APP CON	BOEING TOWER	GND CON	CLNC DEL
<b>127.75</b>	<b>119.2 284.7</b>	<b>120.6 257.8</b>	<b>121.9</b>	<b>132.4</b>



<p>VGSi and RNAV glidepath not coincident. (VGSi Angle 3.00/TCH 55).</p>		OCEZE	6400	BLAKO
<p>JUGOK</p>				
<p>FISEN</p>			<p>tr 123°</p>	
<p>ZAGRO 3.4 NM to RW14R</p>				
<p>OCEZE 1500</p>				
<p>BLAKO 7 NM</p>				
<p>2900</p>				
<p>1700</p>				
<p>1280</p>				
<p>6 NM</p>				
<p>1.1 NM</p>				
<p>1.7 NM</p>				
<p>1.7 NM</p>				
CATEGORY	A	B	C	D
LNAV MDA	680/40	662 (700-¾)	680-1¾	662 (700-1¾)
CIRCLING	760-1	880-1¼	960-2¾	960-3
	738 (800-1)	858 (900-1¼)	938 (1000-2¾)	938 (1000-3)

NW-1, 09 SEP 2021 to 07 OCT 2021

NW-1, 09 SEP 2021 to 07 OCT 2021