

LOC/DME I-BFI 110.9 Chan 46	APP CRS 135°	Rwy Idg TDZE Apt Elev	9120 18 22
------------------------------------------	------------------------	-----------------------------	---------------------------------------

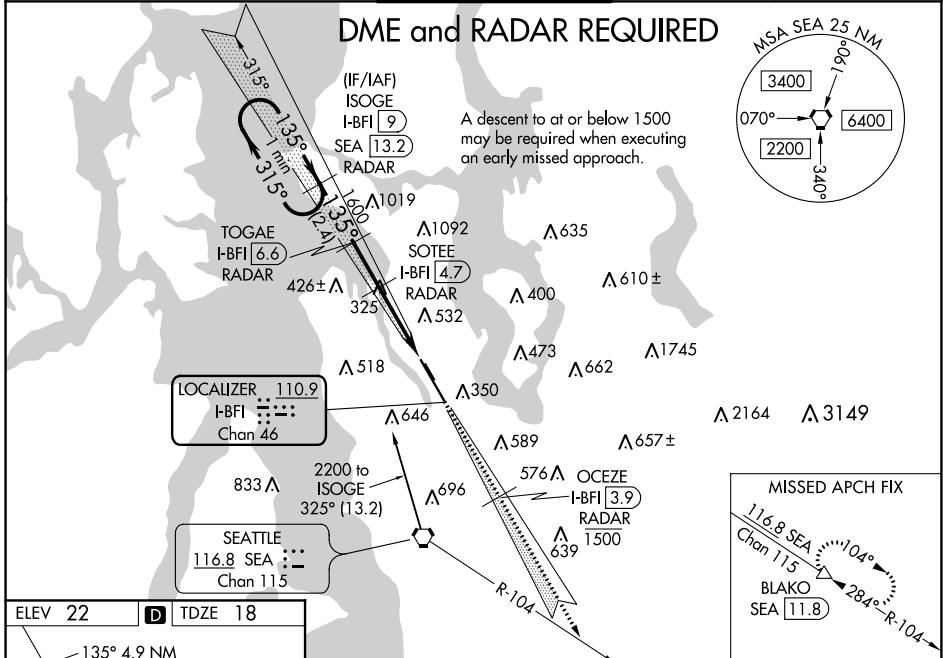
ILS or LOC RWY 14R

BOEING FLD/KING COUNTY INTL (BFI)

⚠ Circling NA for C and D northeast of Rwy 14L-32R. For inop ALS, increase S-LOC 14R visibility Cat A/B to RVR 5500, increase Cat C/D visibility to 1½ SM. DME and RADAR required. Rwy 14R helicopter visibility below ¾ SM NA. Circling Rwy 32R NA at night. S-ILS 14R # numnons NA when VGSI inop.

MALSF
⚠
MISSED APPROACH: Climb on I-BFI SE course to cross OCEZE/I-BFI 3.9 DME/RADAR at or below 1500, then climb to 6400 on I-BFI SE course and SEA R-104 to BLAKO INT/SEA 11.8 DME and hold, continue climb-in-hold to 6400.

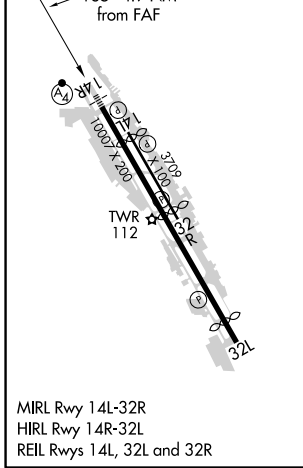
ATIS 127.75	SEATTLE APP CON 119.2 284.7	BOEING TOWER 120.6 257.8	GND CON 121.9	CLNC DEL 132.4
-----------------------	---------------------------------------	------------------------------------	-------------------------	--------------------------



NW-1, 09 SEP 2021 to 07 OCT 2021

NW-1, 09 SEP 2021 to 07 OCT 2021

ELEV 22	D	TDZE 18
----------------	----------	----------------



VGSI and ILS glidepath not coincident (VGSI Angle 3.00/TCH 55).	ISOGE I-BFI 9 RADAR	OCEZE I-BFI 3.9 RADAR 1500	6400 I-BFI SE crs	SEA R-104	BLAKO SEA 11.8
One Minute Holding Pattern	TOGAE I-BFI 6.6 RADAR	SOTEE I-BFI 4.7 RADAR	Use I-BFI DME when on the localizer course.		
2200 ← 315°	1600 ← 135°	1600 ← 135°	*I-BFI 3.4	*I-BFI 1.7	*LOC only
GS 3.00° TCH 39	2.4 NM	1.9 NM	1.4 NM	1.6 NM	
CATEGORY	A	B	C	D	
S-ILS 14R#	308/40 290 (300-¾)				
S-LOC 14R	580/40	562 (600-¾)	580-1⅓	562 (600-1⅓)	
C CIRCLING	760-1 738 (800-1)	880-1¼ 858 (900-1¼)	960-2¾ 938 (1000-2¾)	960-3 938 (1000-3)	