

TACAN Y RWY 16

TACAN KSY Chan 57	APCH CRS 151°	Rwy Ldg 11,550
		TDZE 690
		Arprt Elev 690

AL-371 [USAF]

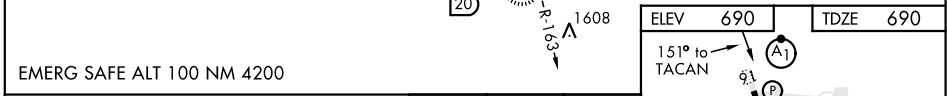
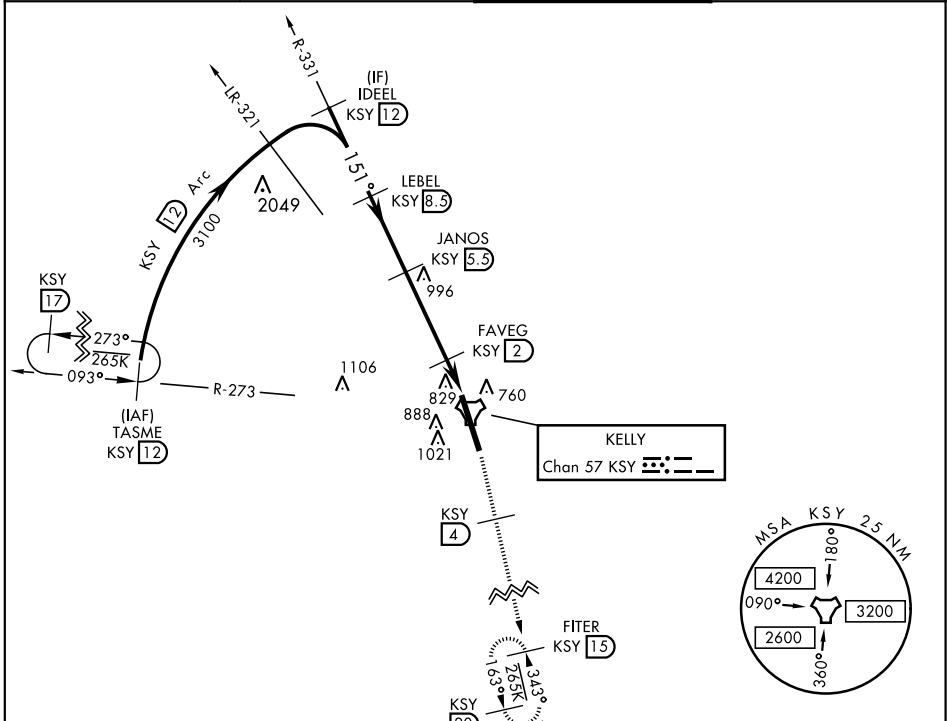
KELLY FLD (KSKF)

▼ * When ALS inop, increase CAT AB RVR to 55 and vis to 1 mile, CAT CDE RVR to 60 and vis to 1½ miles.
 ** Circling not authorized E of Rwy 16-34.

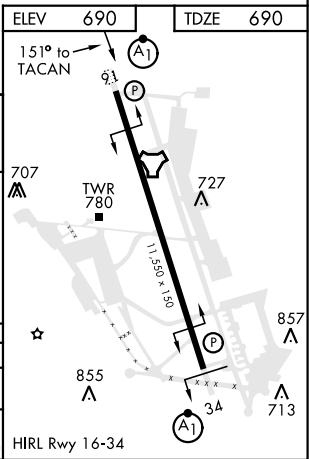
ALSF-1 

MISSED APPROACH: Climb on 2500 via KSY R-163 until 4 DME, then climb to 3000 to FITER/ 15 DME and hold.

ATIS 120.45 273.5	SAN ANTONIO APP CON 118.05 353.5	KELLY TOWER 124.3 322.35	GND CON 121.8 289.4
----------------------	-------------------------------------	-----------------------------	------------------------



TASME R-273 12	IDEEL R-331 12	LEBEL 8.3	JANOS 5.3	FAVEG 2	FAVLA 1	TACAN
4000	3100	2600	2500	1260		
3.27° TCH 57		157°		3.5 NM		
				1 NM		5 NM
				KSY R-163		KSY 4
				2500		KSY 15
				3000 FITER		KSY 1.5



SAN ANTONIO, TEXAS 29° 23' N-98° 35' W KELLY FLD (KSKF)

Amtd 1 13AUG20

TACAN Y RWY 16

SC-3, 09 SEP 2021 to 07 OCT 2021

SC-3, 09 SEP 2021 to 07 OCT 2021