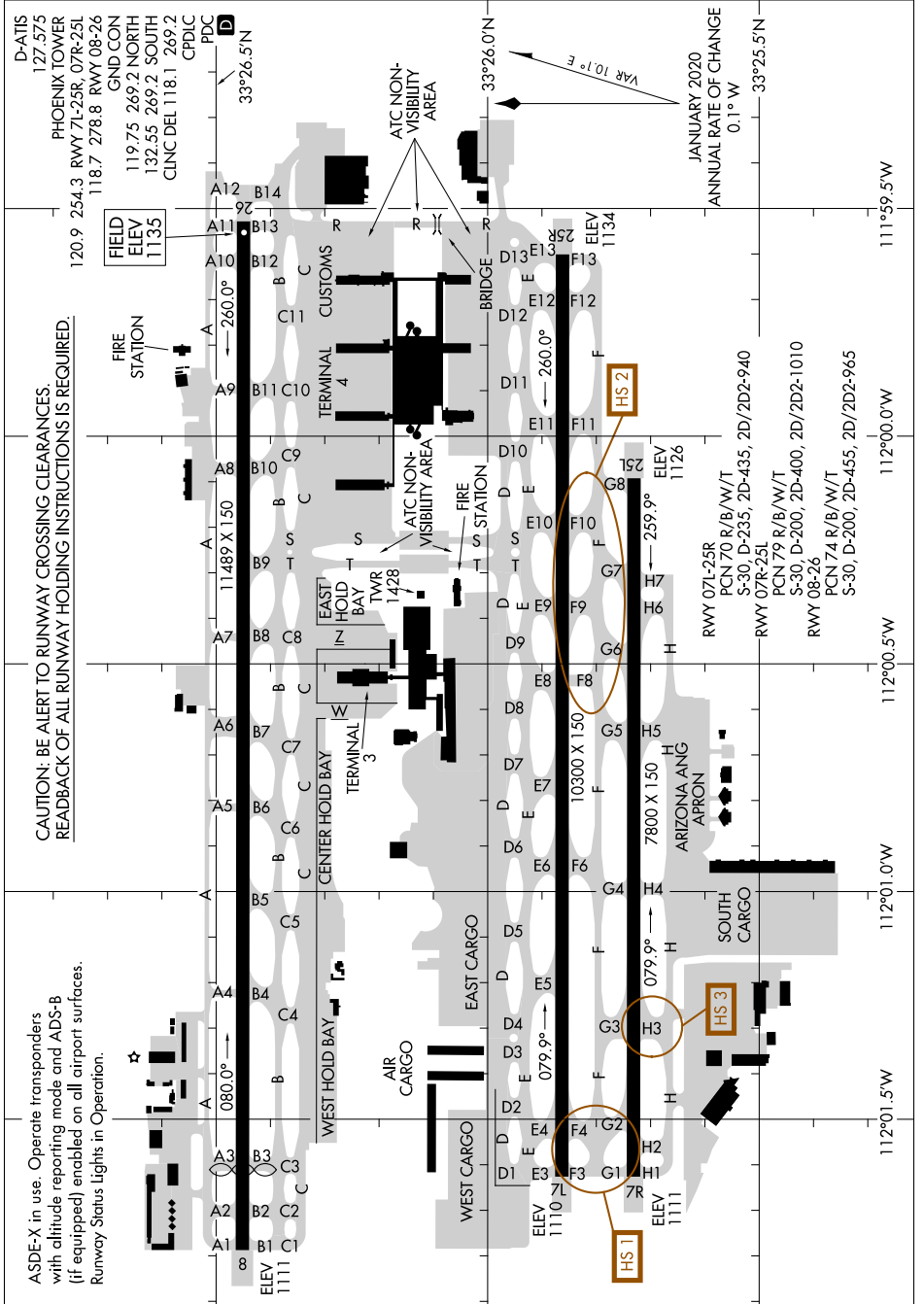


# AIRPORT DIAGRAM

AL-322 (FAA)

SW-4, 09 SEP 2021 to 07 OCT 2021



CAUTION: BE ALERT TO RUNWAY CROSSING CLEARANCES.  
READBACK OF ALL RUNWAY HOLDING INSTRUCTIONS IS REQUIRED.

ASDE-X in use. Operate transponders with altitude reporting mode and ADS-B (if equipped) enabled on all airport surfaces. Runway Status lights in Operation.

SW-4, 09 SEP 2021 to 07 OCT 2021

# AIRPORT DIAGRAM