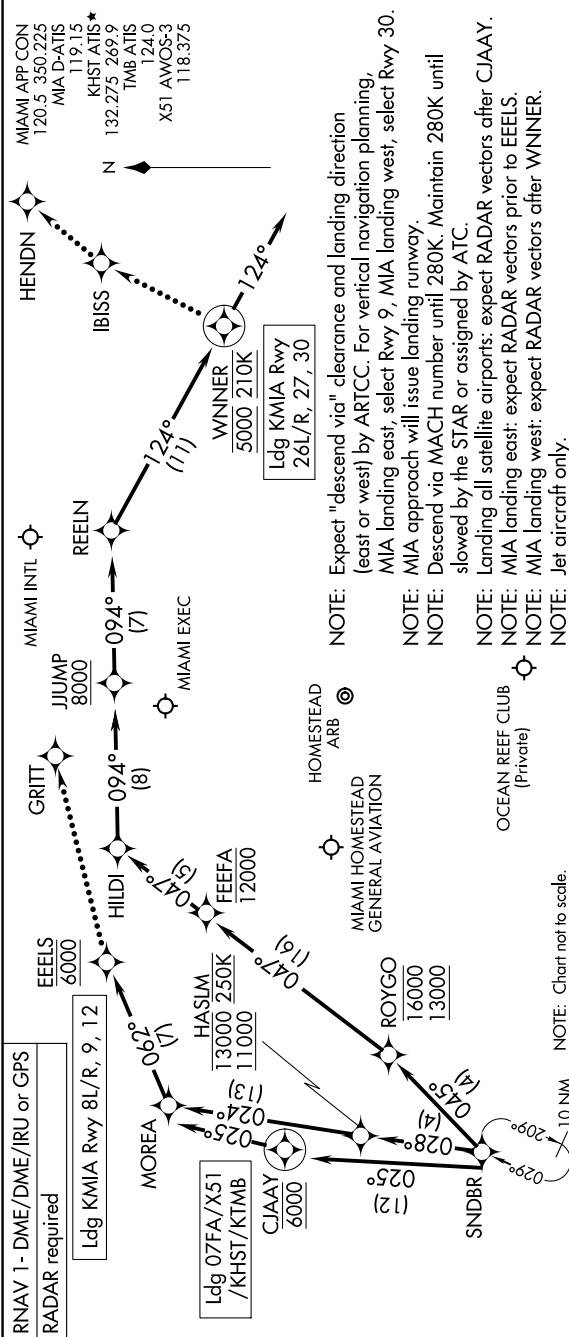


# SNDBR ONE ARRIVAL (RNAV) Arrival Routes

MIAMI, FLORIDA

SE-3: 09 SEP 2021 to 07 OCT 2021



## ARRIVAL ROUTE DESCRIPTION

Landing KMIA RUNWAYS 8L/R, 9, 12: From SNDBR on track 028° to cross HASLM between 11000 and 13000 and at 250K, then on track 024° to MOREA, then on track 062° to cross EEELS at 6000. Expect ILS or LOC RWY 8R, RWY 9, RWY 12 approach.

Landing KMIA RUNWAYS 26L/R, 27, 30: From SNDBR on track 045° to cross ROYGO between 13000 and 16000, then on track 047° to cross FEFEA at or below 12000, then on track 047° to HILDI, then on track 094° to cross JIUMP at or above 8000, then on track 094° to REELN, then on track 124° to cross WINNER at 5000 and at 210K, then on track 124°. Expect RADAR vectors to final approach course.

Landing 07FA/X51/KHST/KTMB: From SNDBR on track 025° to cross CJAAY at 6000, then on track 025°. Expect RADAR vectors to final approach course.

## LOST COMMUNICATIONS

**KMIA LANDING EAST:** Continue track to EEELS, proceed direct GRITT, conduct ILS or LOC RWY 9 approach.

**KMIA LANDING WEST:** Continue track to WINNER, then proceed direct IBISS, then proceed direct HENDN, conduct ILS or LOC RWY 27 approach.

SE-3: 09 SEP 2021 to 07 OCT 2021

# SNDBR ONE ARRIVAL (RNAV) Arrival Routes

MIAMI, FLORIDA