

LOC/DME I-MHT 109.1 Chan 28	APP CRS 352°	Rwy Idg TDZE Apt Elev	7650 265 266
--	------------------------	-----------------------------	---

ILS or LOC RWY 35

MANCHESTER (MHT)

From SHOWZ: RNAV 1-DME/DME/IRU or GPS required.
DME or RADAR required.

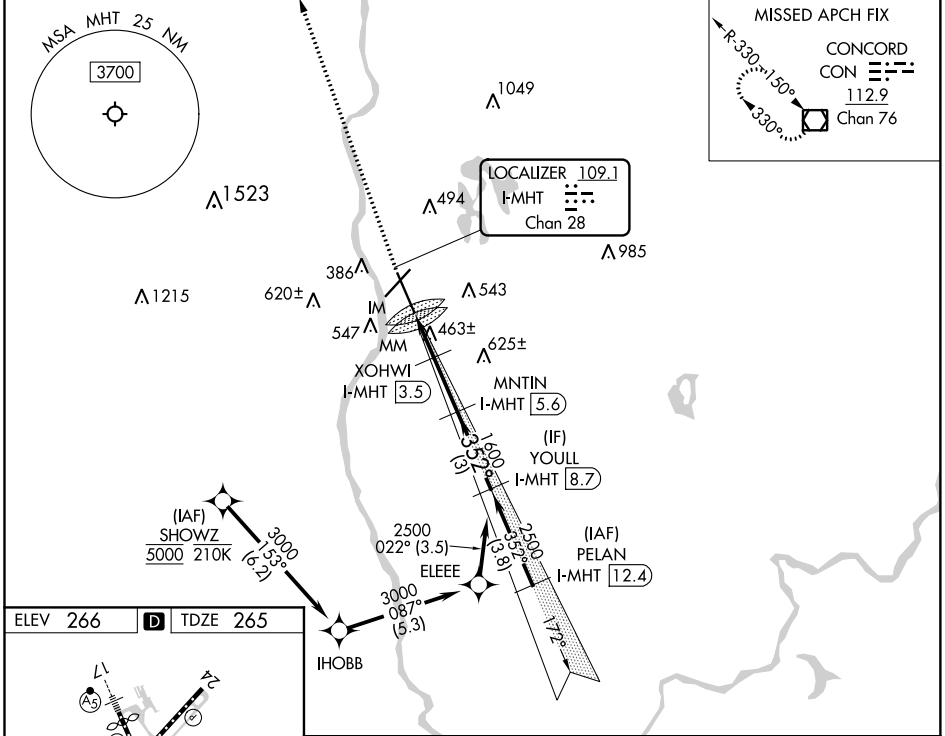
ALSF-2

MISSED APPROACH: Climb to 4000 direct CON VOR/DME and hold.

▼ Rwy 35 helicopter visibility reduction below RVR 4000 NA.
▲ For inop ALS, increase S-LOC 35 Cats A/B visibility to RVR 5500.

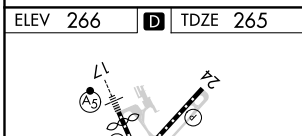


ATIS 119.55	BOSTON APP CON 124.9 269.075	MANCHESTER TOWER 121.3 239.025	GND CON 121.9	CLNC DEL 135.9
-----------------------	--	--	-------------------------	--------------------------

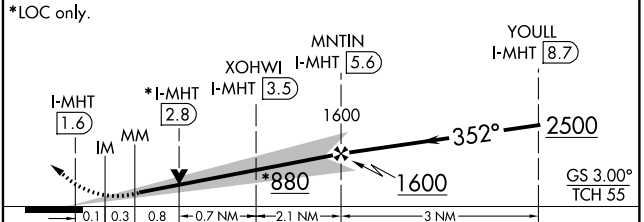


NE-1, 09 SEP 2021 to 07 OCT 2021

NE-1, 09 SEP 2021 to 07 OCT 2021



4000 CON VGSI and ILS glidepath not coincident (VGSI Angle 3.00/TCH 68).
Use I-MHT DME when on the localizer course.



CATEGORY	A	B	C	D
S-ILS 35	465/18 200 (200-1/2)			
S-LOC 35	720/40	455 (500-3/4)	720/45	455 (500-7/8)