

JACKSONVILLE, FLORIDA

# RNAV (RNP) Y RWY 10

APCH CRS	Rwy Idg	<b>8006</b>
<b>096°</b>	TDZE	<b>21</b>
	Arpt Elev	<b>23</b>

AL-209 (USN)

JACKSONVILLE NAS (KNIP)

**▼** \* When ALS inop increase vis to 1 mile.

ALSF-1

MISSED APPROACH: Climb to 600 then climbing right turn to 2000 direct MADEN and hold.

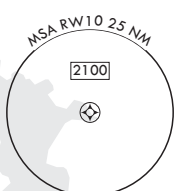
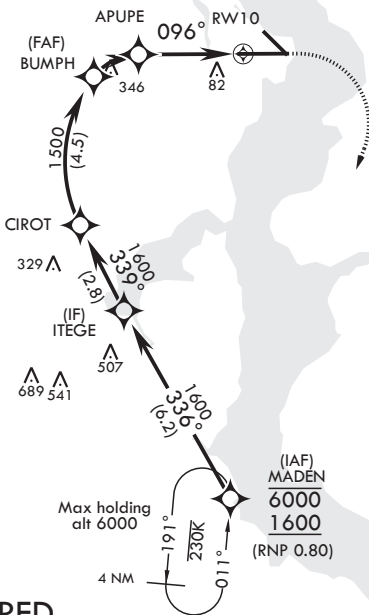


ATIS	APP CON/DEP CON	TOWER	GND CON	CLNC DEL	ASR/PAR
<b>124.35 290.425</b>	<b>127.775 377.075</b>	<b>125.15 (CTAF) 340.2</b>	<b>128.6 336.4</b>	<b>134.775 0 353.675</b>	

RNP AR APCH

For uncompensated Baro-VNAV systems, procedure NA below -1.5°C (5°F) or above 54°C (130°F).

1074  
△



**RF REQUIRED  
AUTHORIZATION REQUIRED**

306  
EMERG SAFE ALT 100 NM 2800

MADEN	ITEGE	CIROT	BUMPH	APUPE	RWY 10
6000 1600	1600	1600	1500	1027	
GP 3.00° TCH 51	336°	339°	1500	096°	
			1.5 NM	3 NM	
CATEGORY	A	B	C	D	
RNP 0.30 DA*	389-%	368	(400-%)		

600

2000

MADEN

ELEV 23

Rwy 10 Idg 8006'

Rwy 14 Idg 3244'

TDZE 21

096° to RWY 10

JACKSONVILLE, FLORIDA

30°14'N - 81°41'W

JACKSONVILLE NAS (KNIP)

Amdt 1 05NOV20

# RNAV (RNP) Y RWY 10

SE-3, 09 SEP 2021 to 07 OCT 2021

SE-3, 09 SEP 2021 to 07 OCT 2021