

WAAS CH 69619 W17A	APP CRS 172°	Rwy Idg TDZE 929 Apt Elev 930	6002
--	------------------------	---	-------------

RNAV (GPS) RWY 17L

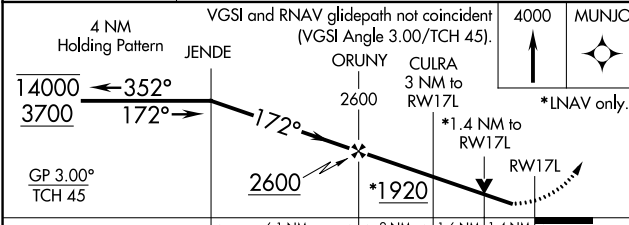
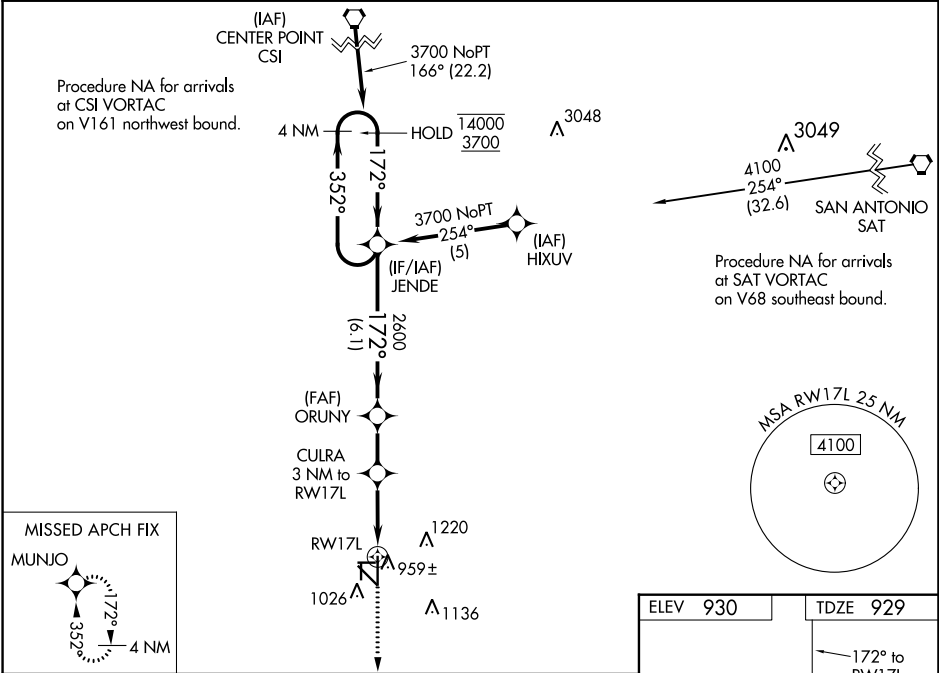
SOUTH TEXAS RGNL AT HONDO (HDO)

RNP APCH.

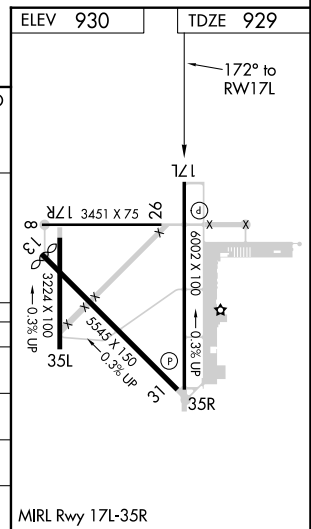
⚠ Baro-VNAV and VDP NA when using Castroville altimeter setting. For uncompensated Baro-VNAV systems, LNAV/VNAV NA below -16°C or above 47°C. When local altimeter setting not received, use Castroville altimeter setting and increase all DA 62 feet and all MDA 80 feet, increase LNAV/VNAV all Cats visibility 1/8 SM, LNAV and Circling Cats C/D visibility 1/4 SM. Rwy 17L helicopter visibility reduction below 3/4 SM NA. Circling to Rwy's 8, 13, 17R, 26, 31 and 35L NA at night.

MISSED APPROACH: Climb to 4000 direct MUNJO and hold, continue climb-in-hold to 4000.

ASOS 119.675	HOUSTON CENTER 134.95 269.4	UNICOM 122.725 (CTAF)
------------------------	---------------------------------------	---------------------------------



CATEGORY	A	B	C	D
LPV DA	1179-1 250 (300-1)			
LNAV/VNAV DA	1314-1 1/4 385 (400-1 1/4)			
LNAV MDA	1420-1 491 (500-1)	1420-1 3/8 491 (500-1 3/8)	1420-1 1/2 491 (500-1 1/2)	
CIRCLING	1440-1 510 (600-1)	1520-1 590 (600-1)	1580-1 3/4 650 (700-1 3/4)	1580-2 650 (700-2)



SC-3, 09 SEP 2021 to 07 OCT 2021

SC-3, 09 SEP 2021 to 07 OCT 2021