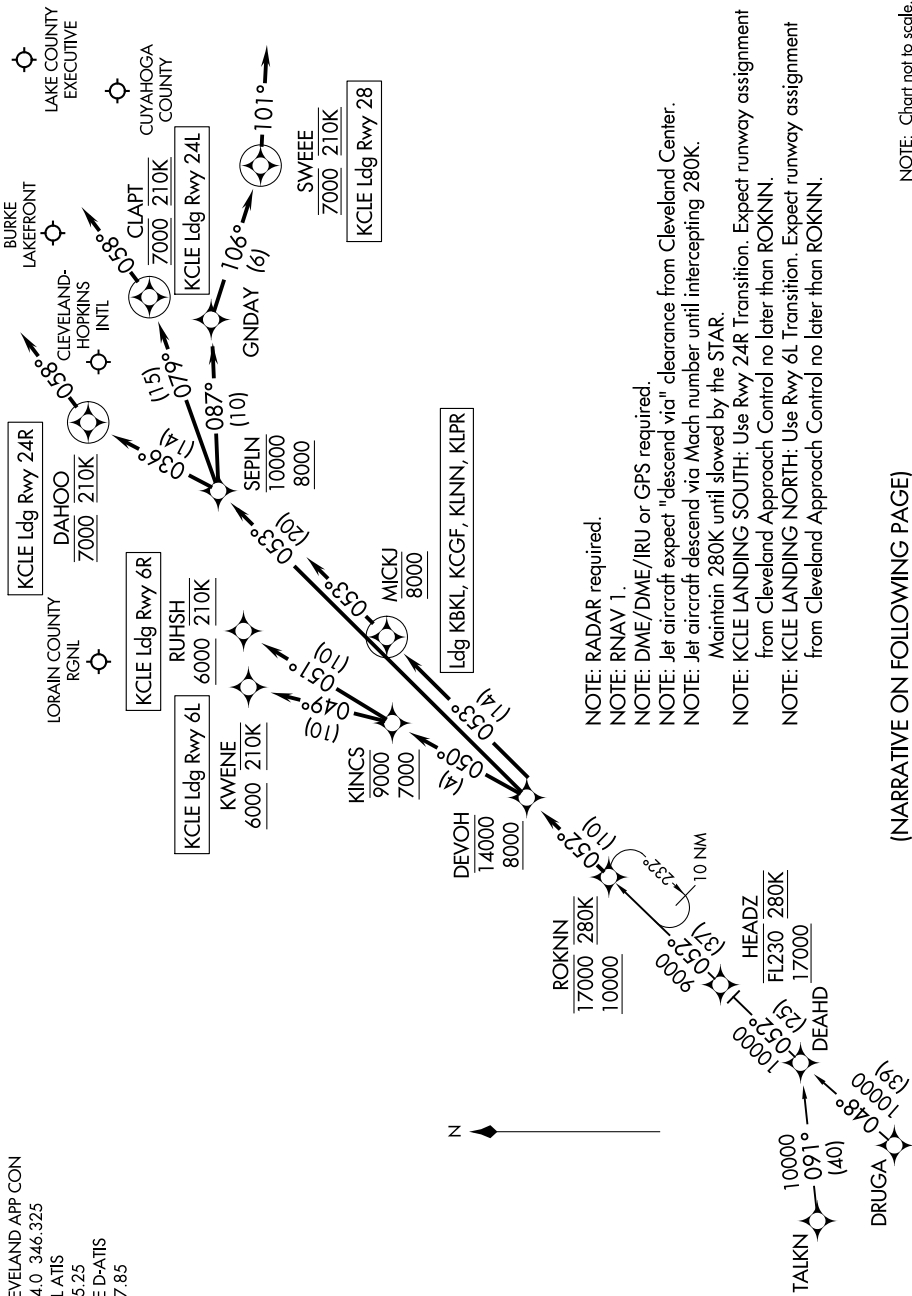


# ROKNN THREE ARRIVAL (RNAV)

CLEVELAND, OHIO

EC-2, 09 SEP 2021 to 07 OCT 2021

CLEVELAND APP CON  
 124.0 346.325  
 BKL ATIS  
 125.25  
 CLE D-ATIS  
 127.85



- NOTE: RADAR required.
- NOTE: RNAV 1.
- NOTE: DME/DME/IRU or GFS required.
- NOTE: Jet aircraft expect "descend via" clearance from Cleveland Center.
- NOTE: Jet aircraft descend via Mach number until intercepting 280K. Maintain 280K until slowed by the STAR.
- NOTE: KCLE LANDING SOUTH: Use Rwy 24R Transition. Expect runway assignment from Cleveland Approach Control no later than ROKNN.
- NOTE: KCLE LANDING NORTH: Use Rwy 6L Transition. Expect runway assignment from Cleveland Approach Control no later than ROKNN.

NOTE: Chart not to scale.

(NARRATIVE ON FOLLOWING PAGE)

# ROKNN THREE ARRIVAL (RNAV)

CLEVELAND, OHIO

EC-2, 09 SEP 2021 to 07 OCT 2021