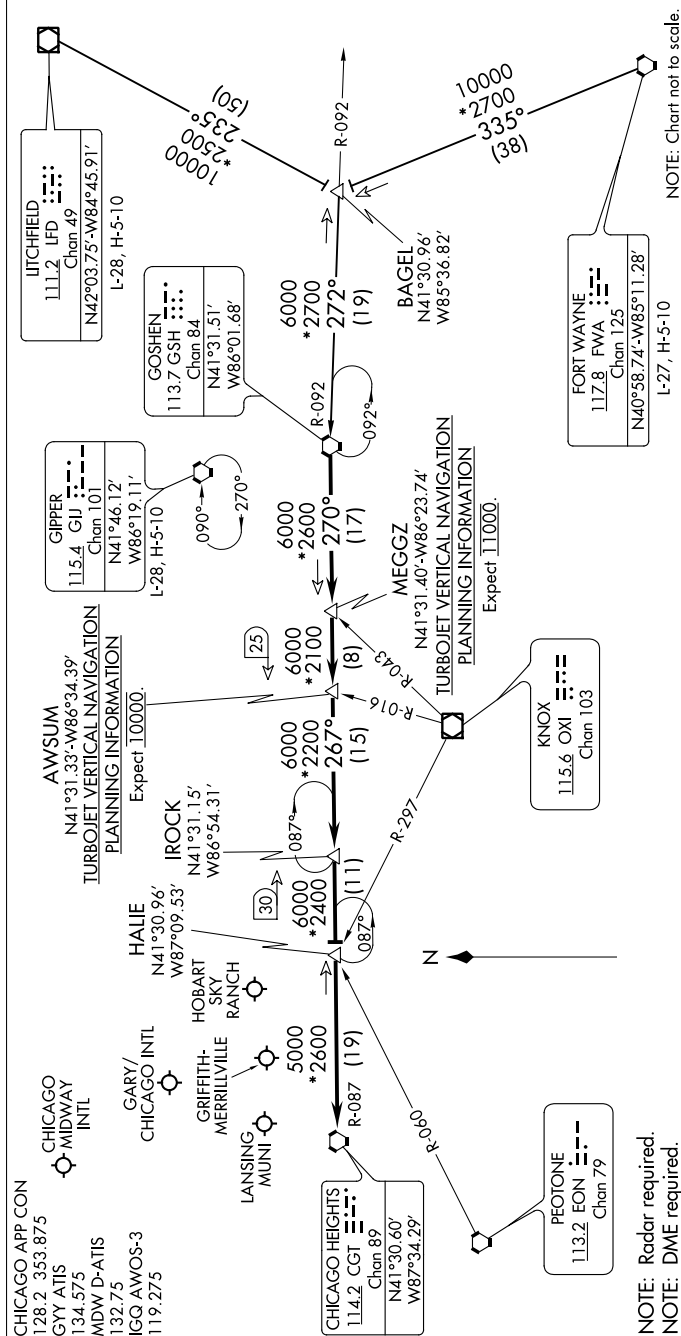


EC-3, 09 SEP 2021 to 07 OCT 2021



ARRIVAL ROUTE DESCRIPTION

**FORT WAYNE TRANSITION (FWA.GSH7):** From over FWA VORTAC on FWA R-335 to BAGEL then on GSH R-092 to GSH VORTAC. Thence....

**LITCHFIELD TRANSITION (LFD.GSH7):** From over LFD VOR/DME on LFD R-235 to BAGEL then on GSH R-092 to GSH VORTAC. Thence....

....From over GSH VORTAC on GSH R-270 to MEGGZ, then on GSH R-270 to AWSUM, then on GSH R-270 and CGT R-087 to IROCK, then on CGT R-087 to HALIE INT, then on CGT R-087 to CGT VORTAC. Expect radar vectors to final approach course.

EC-3, 09 SEP 2021 to 07 OCT 2021