

VOR/DME DDY	APP CRS	Rwy Idg	10165
116.2	203°	TDZE	5330
Chan 109		Apt Elev	5344

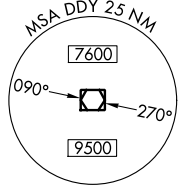
# VOR/DME RWY 21

CASPER/NATRONA COUNTY INTL (CPR)

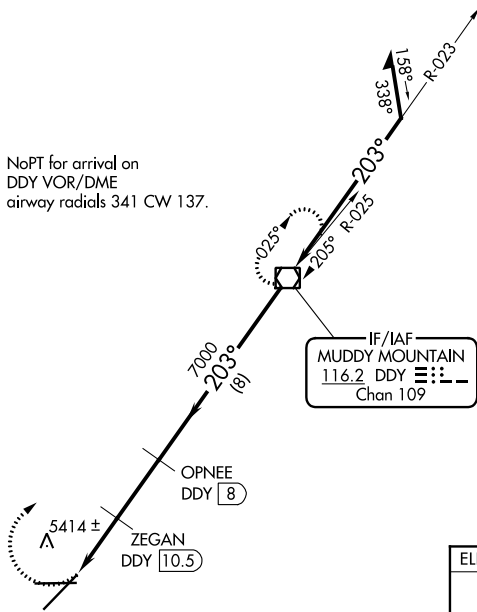
**⚠** VDP NA with Douglas altimeter setting. When local altimeter setting not received, use Douglas altimeter setting and increase all MDAs 180 feet, increase S-21 visibility Cats C/D ½ SM, Circling Cat C ½ SM and Cat D ¼ SM.

**⚠** MISSED APPROACH: Climbing right turn to 7600 direct DDY VOR/DME and hold.

ATIS	CASPER APP CON *	CASPER TOWER *	GND CON	CLNC DEL	UNICOM
126.15	120.65 354.1	118.3 (CTAF) 0 257.8	121.9	121.9 257.8	122.95



NoPT for arrival on DDY VOR/DME airway radials 341 CW 137.

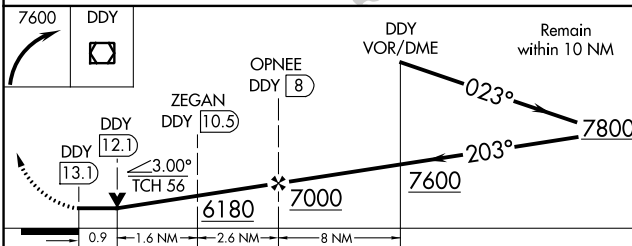
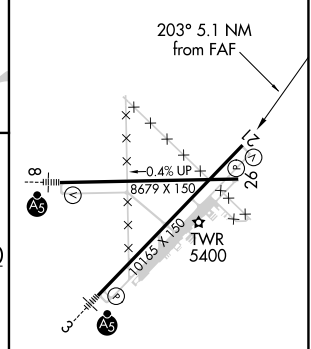


IF/IAF  
MUDDY MOUNTAIN  
116.2 DDY  
Chan 109

NW-1, 09 SEP 2021 to 07 OCT 2021

NW-1, 09 SEP 2021 to 07 OCT 2021

ELEV	5344	D	TDZE	5330
------	------	---	------	------



CATEGORY	A	B	C	D
S-21	5680-1 350 (400-1)			
CIRCLING	5740-1 396 (400-1)	5800-1 456 (500-1)	5860-1½ 516 (600-1½)	6200-2¾ 856 (900-2¾)

REIL Rwy 21 and 26  
HIRL Rwy 3-21 and 8-26