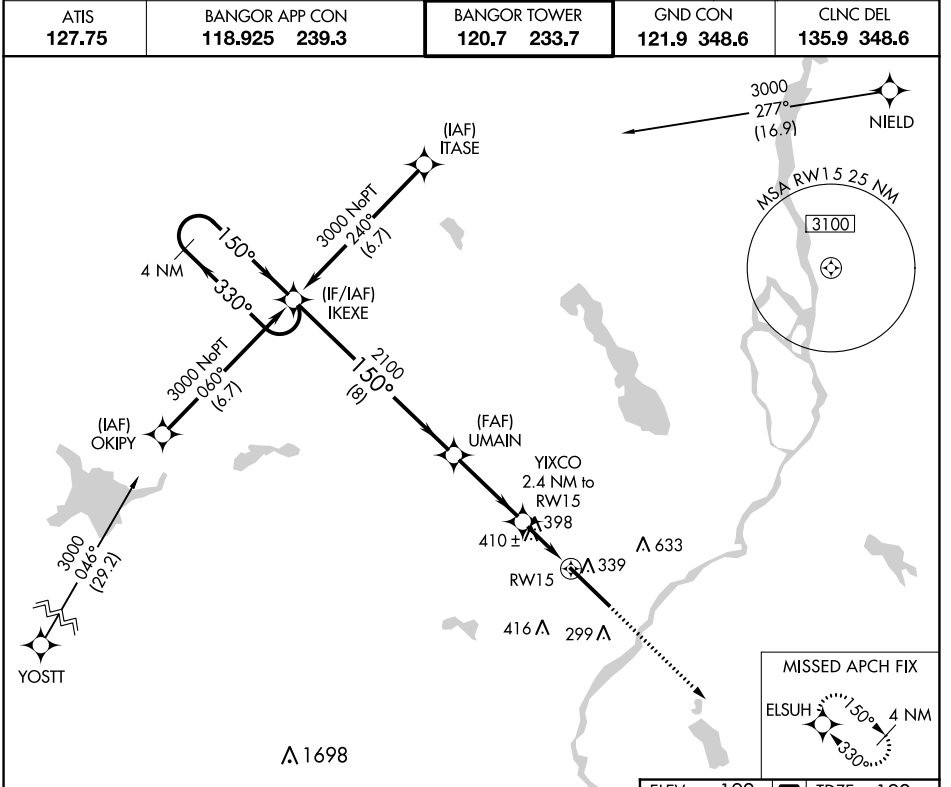


WAAS CH <b>82307</b> W15A	APP CRS <b>150°</b>	Rwy Idg <b>11440</b> TDZE <b>192</b> Apt Elev <b>192</b>
---------------------------------	------------------------	--

# RNAV (GPS) RWY 15

BANGOR INTL (BGR)

<p>ASR</p>	<p>For uncompensated Baro-VNAV systems, LNAV/VNAV NA below -19°C (-2°F) or above 54°C (130°F). DME/DME RNP-0.3 NA. For inoperative ALS, increase LPV Cat E visibility to RVR 4000, LNAV/VNAV all Cats visibility to RVR 6000, and LNAV Cats C/D/E visibility to 1 3/8 SM. Circling NA NE of Rwy 15-33.</p>	<p>ALSIF-2</p>	<p>MISSED APPROACH: Climb to 3000 direct ELSUH and hold.</p>
	<p>ATIS <b>127.75</b>      BANGOR APP CON <b>118.925 239.3</b>      BANGOR TOWER <b>120.7 233.7</b>      GND CON <b>121.9 348.6</b>      CLNC DEL <b>135.9 348.6</b></p>		



NE-1, 09 SEP 2021 to 07 OCT 2021

NE-1, 09 SEP 2021 to 07 OCT 2021

<p>4 NM Holding Pattern</p> <p>3000 ← 330° / 150° →</p> <p>GP 3.00° TCH 50</p>		<p>VGSI and RNAV glidepath not coincident (VGSI Angle 3.00/TCH 55).</p> <p>IKEXE      UMAIN      YIXCO</p> <p>2100      2100      2.4 NM to RWY 15</p> <p>1000*      *1.3 NM to RWY 15</p>		<p>3000      ELSUH</p> <p>↑      *</p> <p>* LNAV only.</p>	
CATEGORY	A	B	C	D	E
LPV DA	392/24		200 (200-1/2)		
LNAV/VNAV DA	541/40		349 (400-3/4)		
LNAV MDA	660/24	468 (500-1/2)	660/50		468 (500-1)
<p>CIRCLING</p>	660-1	720-1	740-1 1/2	820-2	880-2 1/2
	468 (500-1)	528 (600-1)	548 (600-1 1/2)	628 (700-2)	688 (700-2 1/2)

