

WAAS CH <b>72927</b> <b>W36A</b>	APP CRS <b>359°</b>	Rwy Idg <b>5000</b> TDZE <b>59</b> Apt Elev <b>61</b>
-------------------------------------	---------------------	---

# RNAV (GPS) RWY 36

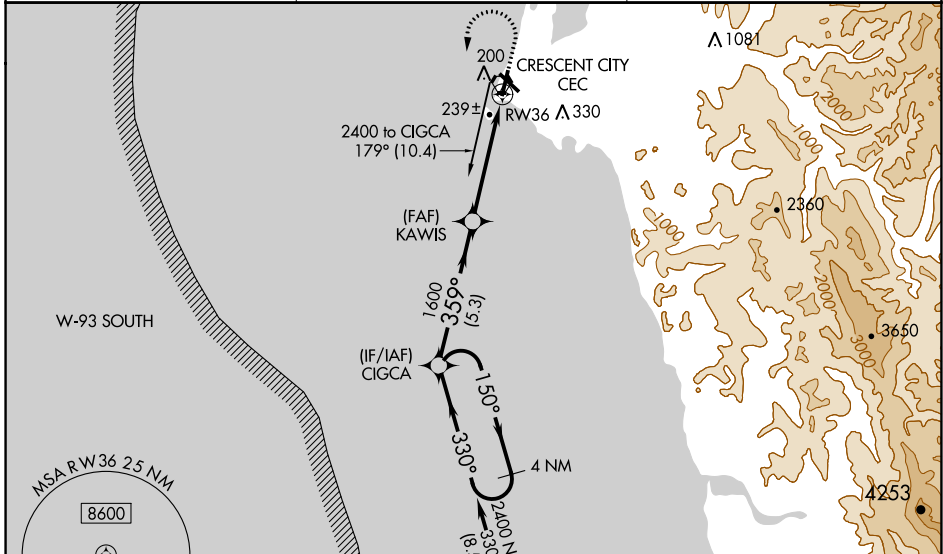
JACK MC NAMARA FIELD (CEC)

RNP APCH.

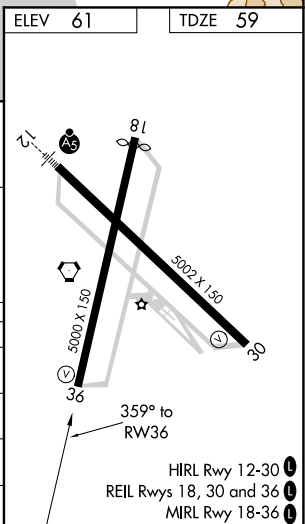
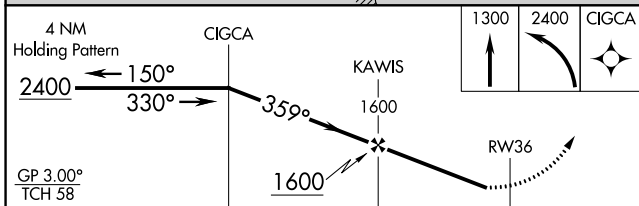
▼ Baro-VNAV NA when using Brookings altimeter setting. For uncompensated Baro-VNAV systems, LNAV/VNAV NA below -15°C or above 54°C. When local altimeter setting not received, use Brookings altimeter setting and increase LPV DA to 406 and LNAV/VNAV DA to 505 and all MDA 100 feet; increase LPV all Cats and LNAV Cat C/D and Circling Cat D visibilities ¼ SM, increase LNAV/VNAV all Cats visibility ⅜ SM, and Circling Cat C visibility ½ SM. Rwy 36 helicopter visibility reduction below 1 SM NA. Straight-In Rwy 36 at night, operational VGSI required, remain on or above VGSI glidepath until threshold. Circling Rwy 18, 30 NA at night.

MISSED APPROACH: Climb to 1300 then climbing left turn to 2400 direct CIGCA and hold.

ASOS <b>119.925</b>	SEATTLE CENTER <b>124.85 306.3</b>	UNICOM <b>122.8 (CTAF) 0</b>
---------------------	------------------------------------	------------------------------



ELEV <b>61</b>	TDZE <b>59</b>
----------------	----------------



CATEGORY	A	B	C	D
LPV DA		309-1	250 (300-1)	
LNAV/VNAV DA		408-1½	349 (400-1½)	
LNAV MDA	500-1	441 (500-1)	500-1¾	441 (500-1¾)
<b>C</b> CIRCLING	540-1	479 (500-1)	640-1½ 579 (600-1½)	640-2 579 (600-2)

SW-2, 09 SEP 2021 to 07 OCT 2021

SW-2, 09 SEP 2021 to 07 OCT 2021