

WAAS CH <b>65902</b> <b>W30A</b>	APP CRS <b>300°</b>	Rwy Idg TDZE Apt Elev	<b>4500</b> <b>55</b> <b>79</b>
--	------------------------	-----------------------------	---------------------------------------

# RNAV (GPS) RWY 30

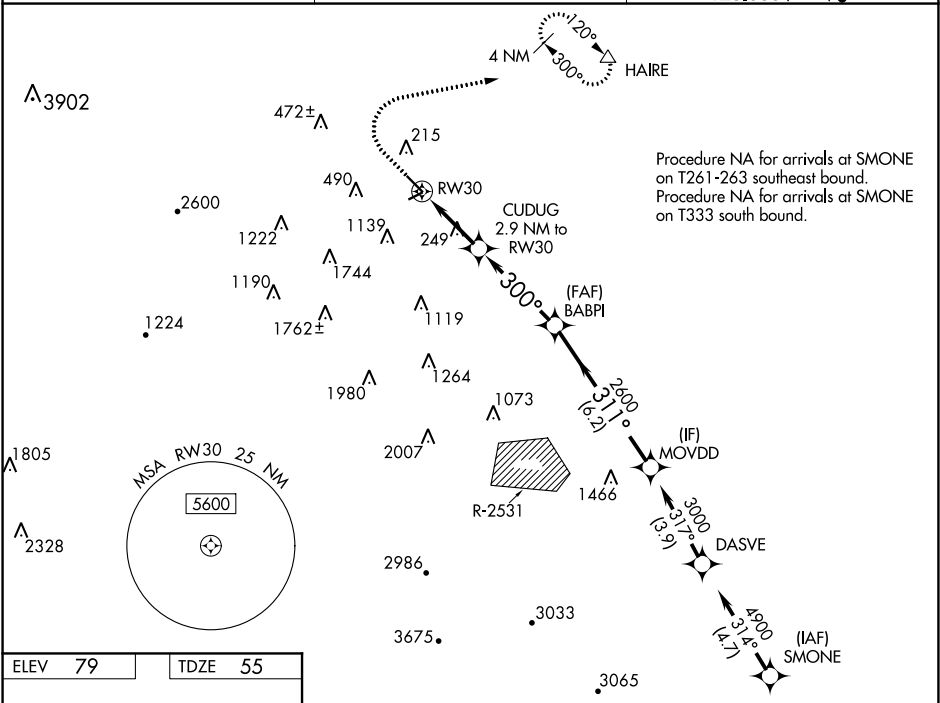
BYRON (C83)

RNP APCH.

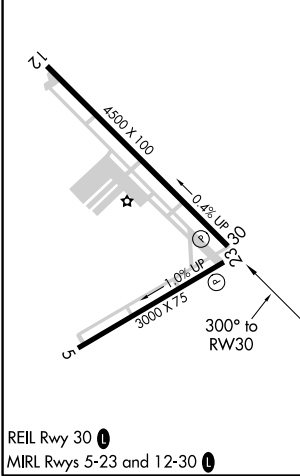
For uncompensated Baro-VNAV systems, LNAV/VNAV NA below -15°C (5°F) or above 15°C (59°F). Circling NA southwest of Rwy 12-30.

MISSED APPROACH: Climb to 1000, then climbing right turn 4000 direct HAIRE and hold, continue climb-in-hold 4000.

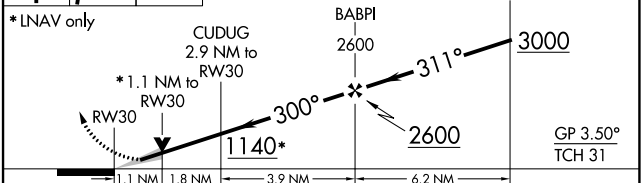
AWOS-3 <b>123.775</b>	NORCAL APP CON <b>123.85 278.3</b>	UNICOM <b>123.050 (CTAF)</b>
--------------------------	---------------------------------------	---------------------------------



ELEV 79	TDZE 55
---------	---------



1000 4000 HAIRE  
 VGSi and RNAV glidepath not coincident (VGSi Angle 3.50/ TCH 25).



CATEGORY	A	B	C	D
LPV DA	325-7/8 270 (300-7/8)			
LNAV/VNAV DA	404-1 3/8 349 (400-1 1/8)			
LNAV MDA	500-1	445 (500-1)	500-1 3/8	445 (500-1 1/8)
CIRCLING	600-1	521 (600-1)	680-1 3/4 601 (700-1 3/4)	820-2 1/2 741 (800-2 1/2)

SW-2, 15 JUL 2021 to 12 AUG 2021

SW-2, 15 JUL 2021 to 12 AUG 2021