

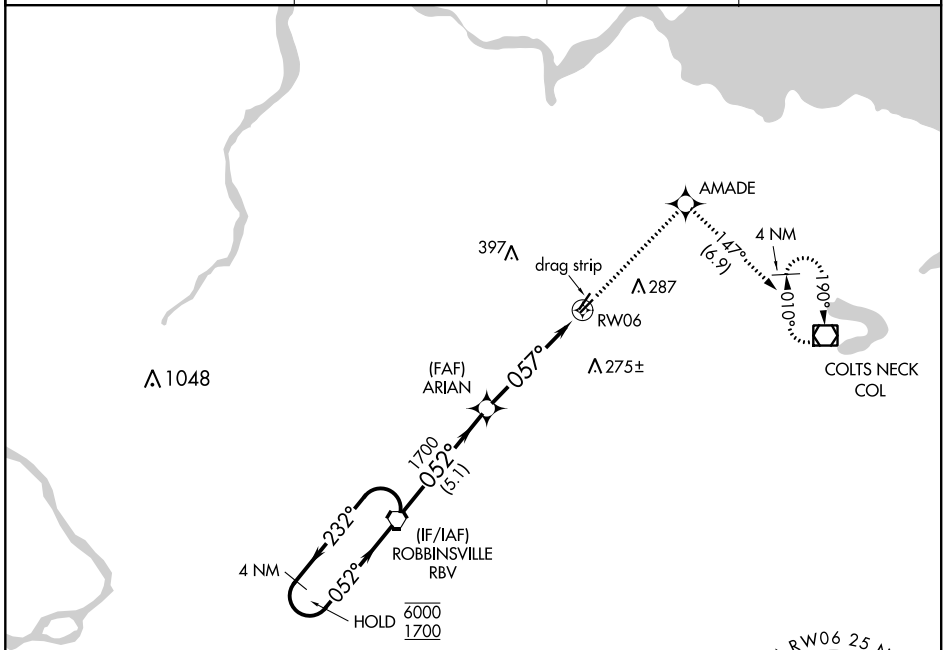
APP CRS	Rwy Idg	<b>2994</b>
<b>057°</b>	TDZE	<b>87</b>
	Apt Elev	<b>87</b>

# RNAV (GPS) RWY 6

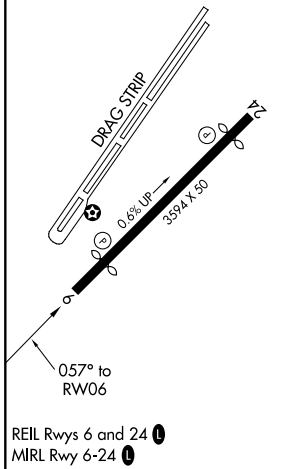
OLD BRIDGE (3N6)

RNP APCH.	Procedure NA at night. Rwy 6 helicopter visibility reduction below 1 SM NA. Use Belmar/Farmingdale altimeter setting; when not received, use Wrightstown altimeter setting and increase all MDA 20 feet.	MISSED APPROACH: Climb to 2000 direct AMADE and on track 147° to COL VOR/DME and hold.
-----------	---	--

BLM AWOS-3PT <b>121.625</b>	MC GUIRE APP CON <b>126.475 363.8</b>	GCO <b>121.725</b>	UNICOM <b>123.075 (CTAF)</b>
--------------------------------	--	-----------------------	---------------------------------

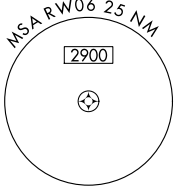


ELEV 87	TDZE 87
---------	---------



OLD BRIDGE, NEW JERSEY  
Orig-C 15AUG19

NoPT for arrival on RBV VORTAC airway radials 238 CW 289.



Visual Segment - Obstacles.				2000	AMADE	tr 147°	COL
4 NM Holding Pattern							
RBV VORTAC				ARIAN			
6000	← 232°	→ 052°	1700	057°			
5.1 NM				4.9 NM			
CATEGORY	A	B	C	D			
LNAV MDA	660-1 573 (600-1)			NA			

NE-2, 15 JUL 2021 to 12 AUG 2021

NE-2, 15 JUL 2021 to 12 AUG 2021