

WAAS CH <b>77699</b> <b>W17A</b>	APP CRS <b>176°</b>	Rwy Idg <b>5006</b> TDZE <b>474</b> Apt Elev <b>474</b>
--	------------------------	---

# RNAV (GPS) RWY 17

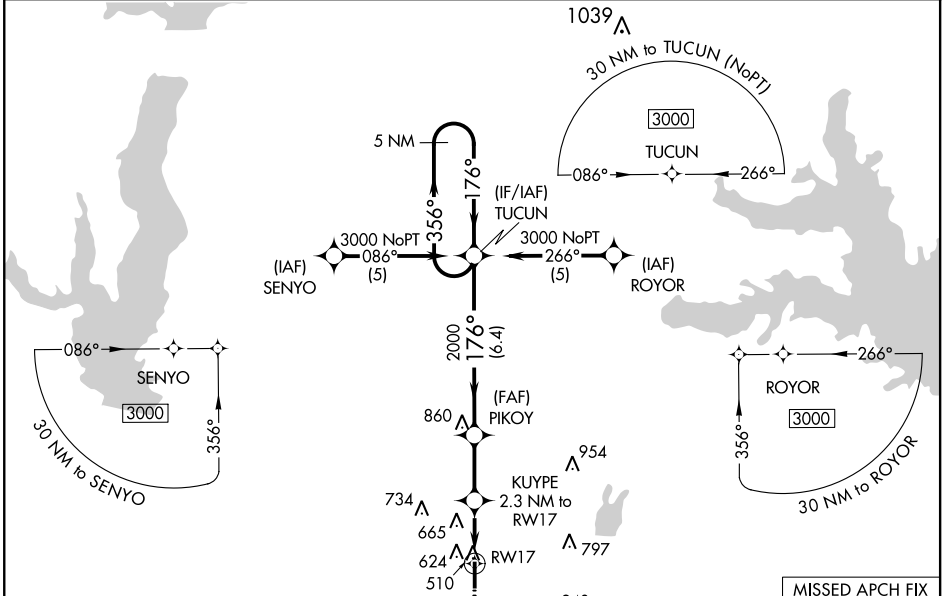
TERRELL MUNI (TRL)



When local altimeter setting not received, use Dallas Love Fld altimeter setting and increase all DA 73 feet and all MDA 80 feet; increase LNAV/VNAV all Cats visibility to 2½ mile, LNAV Cat C to 1½ mile and Circling Cat C to 1¾ mile. Baro-VNAV and VDP NA when using Dallas Love Fld altimeter setting. For uncompensated Baro-VNAV systems, LNAV/VNAV NA below -7°C (20°F) or above 54°C (130°F). DME/DME RNP-0.3 NA. Helicopter visibility reduction below ¾ SM NA.

MISSED APPROACH: Climb to 3000 direct OLEGE and hold.

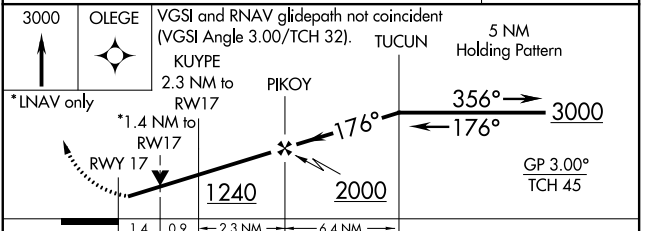
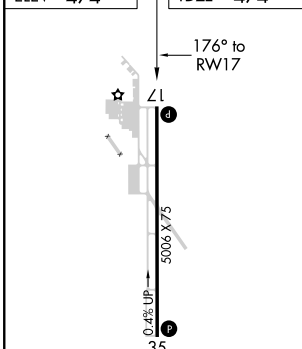
ASOS <b>119.275</b>	FORT WORTH CENTER <b>132.025 360.75</b>	UNICOM <b>122.8 (CTAF) 0</b>
------------------------	--	---------------------------------



SC-2, 15 JUL 2021 to 12 AUG 2021

SC-2, 15 JUL 2021 to 12 AUG 2021

ELEV <b>474</b>	TDZE <b>474</b>
-----------------	-----------------



CATEGORY	A	B	C	D
LPV DA	756-1 282 (300-1)			NA
LNAV/VNAV DA	1013-1½ 539 (600-1½)			NA
LNAV MDA	960-1 486 (500-1)		960-1½ 486 (500-1½)	NA
CIRCLING	1000-1 526 (600-1)	1020-1 546 (600-1)	1020-1½ 546 (600-1½)	NA

RLS Rwy 17  
REL Rws 17 and 35  
MIRL Rws 17-35