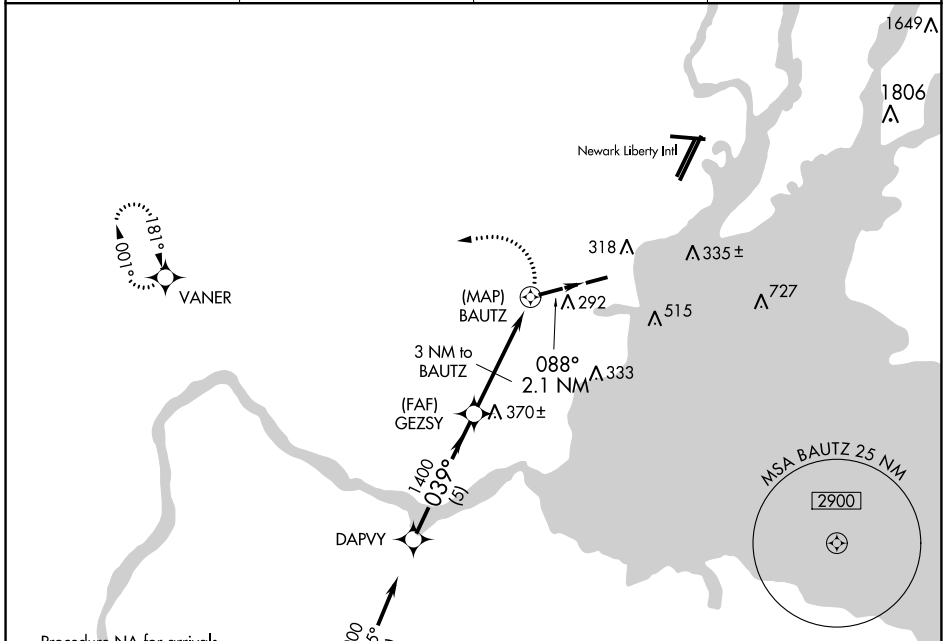


APP CRS <b>039°</b>	Rwy Idg TDZE Apt Elev	<b>N/A</b> <b>N/A</b> <b>22</b>
------------------------	-----------------------------	---------------------------------------

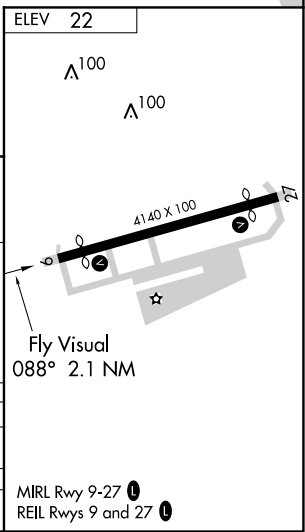
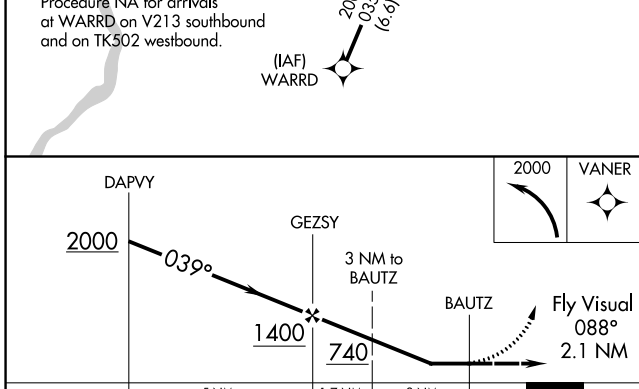
**GPS-A**  
LINDEN (LDJ)

RNP APCH - GPS	MISSED APPROACH: Climbing left turn to 2000 direct VANER WP and hold.
<p>▼ When local altimeter setting not received, use Newark Liberty Intl altimeter setting. Helicopter visibility reduction below 1 SM NA. Procedure NA at night.</p> <p>▲ NA</p>	

AWOS-3 <b>124.025</b>	NEW YORK APP CON <b>135.35 379.9</b>	CLNC DEL <b>127.25</b>	UNICOM <b>123.0 (CTAF)</b>
--------------------------	-----------------------------------------	---------------------------	-------------------------------



Procedure NA for arrivals at WARRD on V213 southbound and on TK502 westbound.



CATEGORY	A	B	C	D
CIRCLING	620-2½	598 (600-2½)	880-2½ 858 (900-2½)	NA
NEWARK ALTIMETER SETTING MINIMUMS				
CIRCLING	640-2½	618 (700-2½)	900-2½ 878 (900-2½)	NA

NE-2, 15 JUL 2021 to 12 AUG 2021

NE-2, 15 JUL 2021 to 12 AUG 2021