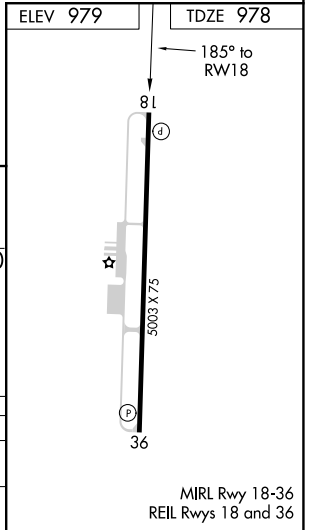
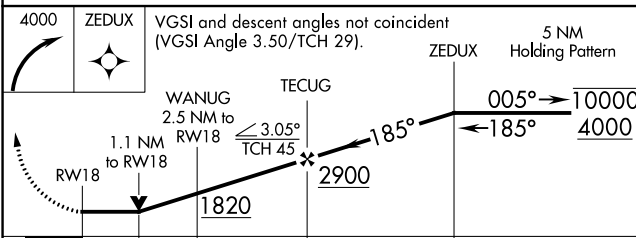
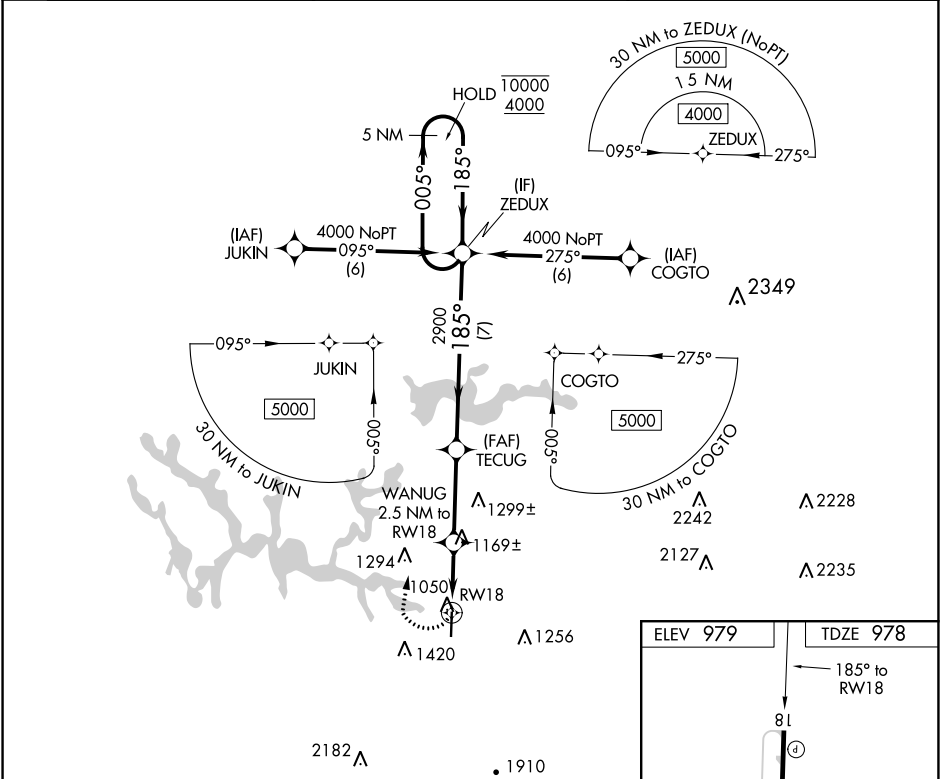


APP CRS	Rwy Idg	5003
185°	TDZE	978
	Apt Elev	979

RNAV (GPS) Y RWY 18

WINCHESTER MUNI (BGF)

RNP APCH.		MISSED APPROACH: Climbing right turn to 4000 direct ZEDUX and hold.	
Rwy 18 helicopter visibility reduction below 3/4 SM NA.		AWOS-3 121.675	MEMPHIS CENTER 128.15 323.125
		GCO 121.725	UNICOM 122.8 (CTAF)



CATEGORY	A	B	C	D
LNVA MDA	1420-1	442 (500-1)	1420-1 3/8 442 (500-1 3/8)	1420-1 1/2 442 (500-1 1/2)
CIRCLING	1480-1 501 (600-1)	1780-1 801 (900-1)	1820-2 1/2 841 (900-2 1/2)	2380-3 1401 (1500-3)

SE-1, 15 JUL 2021 to 12 AUG 2021

SE-1, 15 JUL 2021 to 12 AUG 2021