

APP CRS 329°	Rwy Idg TDZE Apt Elev	4004 811 811
------------------------	-----------------------------	-----------------------------------------

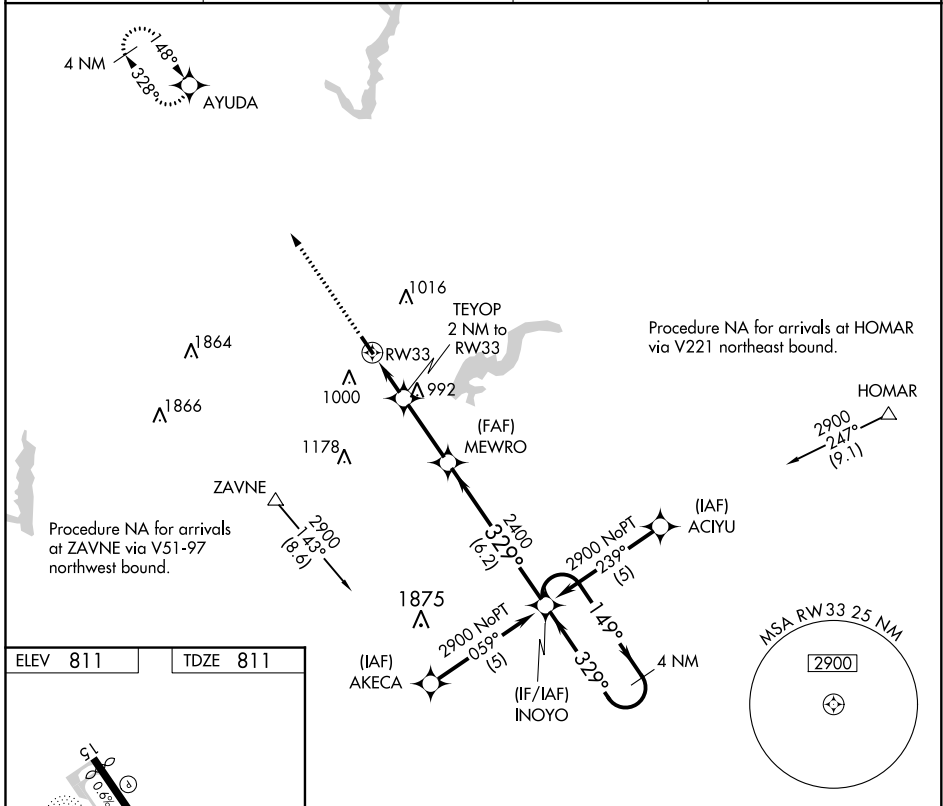
RNAV (GPS) RWY 33

INDIANAPOLIS METROPOLITAN (UMP)

▽ DME/DME RNP-0.3 NA. When local altimeter setting not received, use Indianapolis Intl altimeter setting and increase all MDA 60 feet and LNAV Cat C visibility ¼ mile. VDP NA when using Indianapolis Intl altimeter setting. Rwy 33 helicopter visibility reduction below ¾ SM NA.

△ NA MISSED APPROACH: Climb to 2500 direct AYUDA and hold.

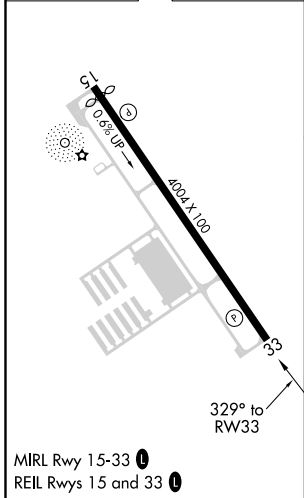
AWOS-3 119.375	INDIANAPOLIS APP CON 127.15 317.8	CLNC DEL 121.625	UNICOM 123.0 (CTAF) 0
--------------------------	---------------------------------------------	----------------------------	---------------------------------



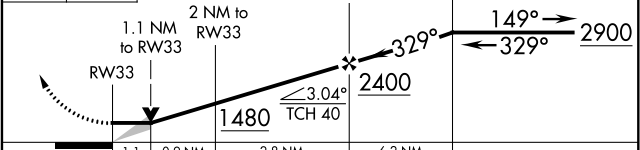
EC-2, 15 JUL 2021 to 12 AUG 2021

EC-2, 15 JUL 2021 to 12 AUG 2021

ELEV 811	TDZE 811
----------	----------



2500 AYUDA VGSi and descent angles not coincident (VGSi Angle 3.50/TCH 27). 4 NM Holding Pattern



CATEGORY	A	B	C	D
LNAV MDA	1260-1	449 (500-1)	1260-1¼ 449 (500-1¼)	NA
C CIRCLING	1320-1 509 (600-1)	1340-1 529 (600-1)	1340-1½ 529 (600-1½)	NA