

LOC/DME I-AIK 109.9 Chan 36	APP CRS 066°	Rwy Idg TDZE Apt Elev	5500 515 529
---	------------------------	-----------------------------	---

ILS or LOC/DME RWY 7

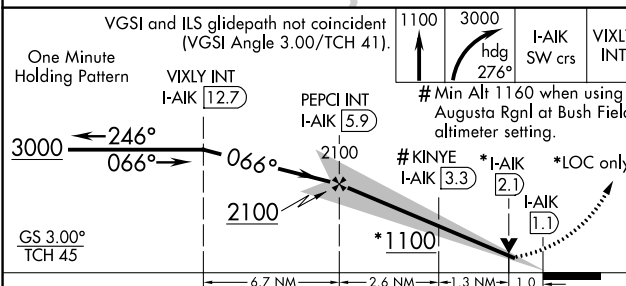
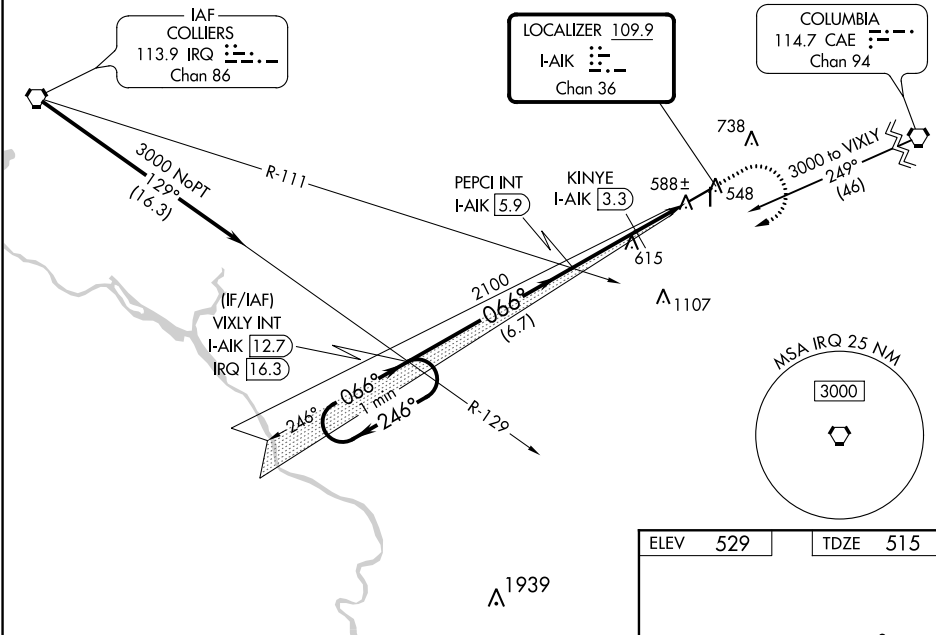
AIKEN RGNL (AIK)

V **NA** VDP NA with Augusta Rgnl at Bush Fld altimeter setting. When local altimeter setting not received; use Augusta Rgnl at Bush Fld altimeter setting and increase all DA 104 feet and all MDA 120 feet; increase S-ILS 7 all Cats and Circling Cat D visibilities ¼ mile and S-LOC 7 Cats C and D visibilities ⅓ mile.

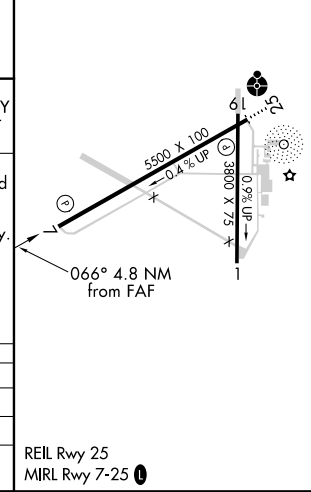
MISSED APPROACH: Climb to 1100 then climbing right turn to 3000 on heading 276° and I-AIK SW course (246°) to VIXLY INT/I-AIK 12.7 DME and hold.

AWOS-3 118.025	AUGUSTA APP CON * 119.15 284.625	CLNC DEL 126.075	UNICOM 122.8 (CTAF)
--------------------------	--	----------------------------	-------------------------------

Procedure NA for arrivals on IRQ VORTAC airway radials 084 CW 174.



ELEV 529	TDZE 515
----------	----------



CATEGORY	A	B	C	D
S-ILS 7		715-¾	200 (200-¾)	
S-LOC 7		880-1	365 (400-1)	
CIRCLING	980-1 451 (500-1)	1000-1 471 (500-1)	1000-1½ 471 (500-1½)	1080-2 551 (600-2)

SE-2, 15 JUL 2021 to 12 AUG 2021

SE-2, 15 JUL 2021 to 12 AUG 2021