

WAAS CH <b>50540</b> <b>W18A</b>	APP CRS <b>182°</b>	Rwy Idg TDZE <b>188</b> Apt Elev <b>188</b>	<b>4503</b>
--	------------------------	---	-------------

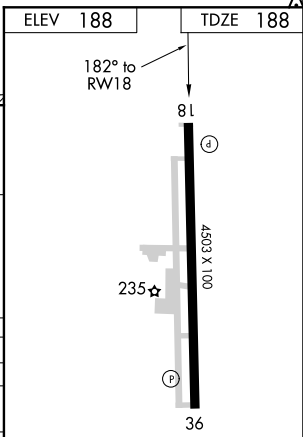
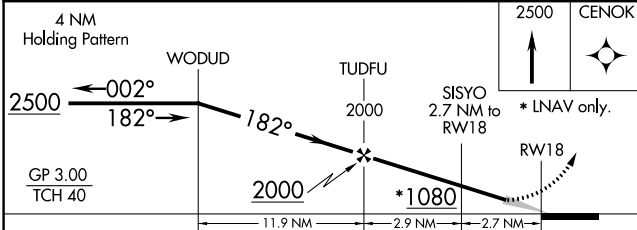
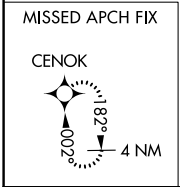
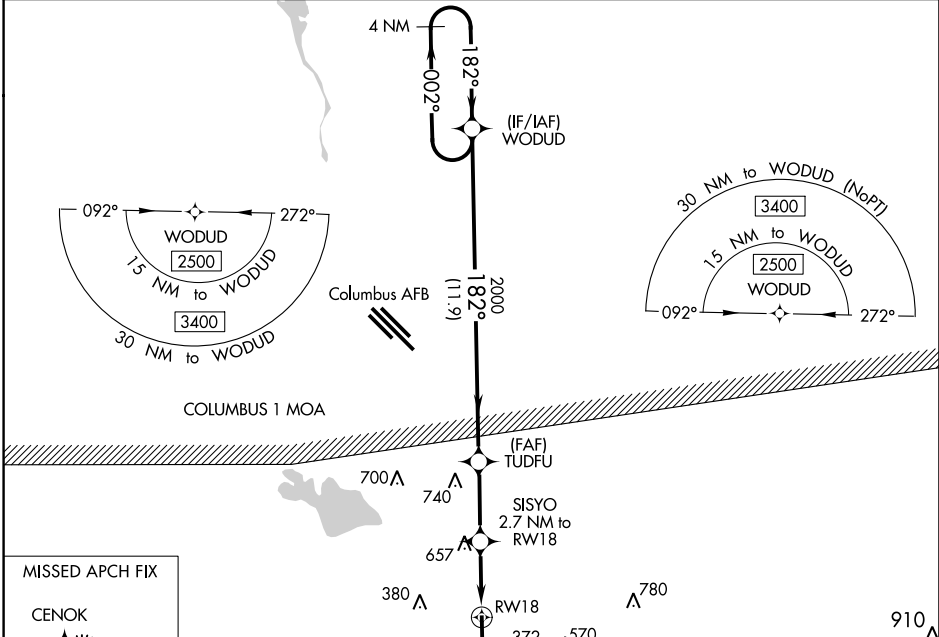
# RNAV (GPS) RWY 18

COLUMBUS-LOWNDES COUNTY (UBS)

**W** DME/DME RNP-0.3 NA. Use Columbus AFB altimeter setting; when not received, use Golden Triangle Rgnl altimeter setting and increase all DA 5 feet and all MDA 20 feet. Baro-VNAV NA.

**MISSED APPROACH:** Climb to 2500 direct CENOK and hold.

COLUMBUS APP CON ★ <b>135.6 323.275</b>	UNICOM <b>122.8 (CTAF) 0</b>
--	---------------------------------



CATEGORY	A	B	C	D
LPV DA		469-1	281 (300-1)	
LNAV/VNAV DA		1107-4	919 (1000-4)	
LNAV MDA	1000-1 812 (900-1)	1000-1¼ 812 (900-1¼)	1000-2½	812 (900-2½)
<b>C</b> CIRCLING	1000-1¼	812 (900-1¼)	1040-2½ 852 (900-2½)	1040-2¾ 852 (900-2¾)

MIRL Rwy 18-36 **0**

SC-4, 15 JUL 2021 to 12 AUG 2021

SC-4, 15 JUL 2021 to 12 AUG 2021