

APP CRS	Rwy ldg	5998
229°	TDZE	183
	Apt Elev	187

RNAV (RNP) Y RWY 23

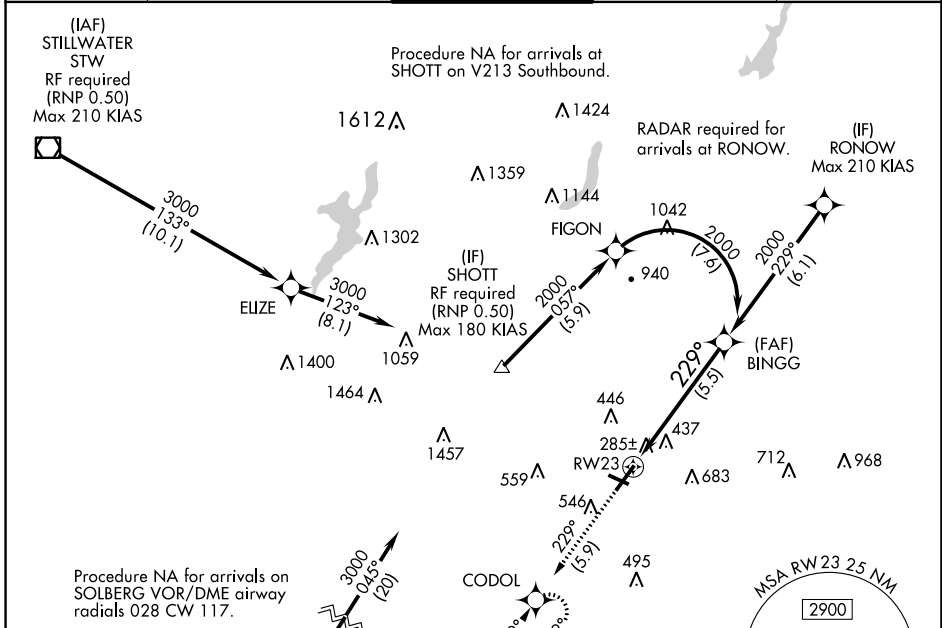
MORRISTOWN MUNI (MMU)

For uncompensated Baro-VNAV systems, procedure NA below -15°C (5°F) or above 48°C (118°F). When local altimeter setting not received, procedure NA. GPS required. For inoperative MALSR, increase RNP 0.11 all Cats visibility to 1¼ mile and RNP 0.30 all Cats visibility to 2 miles. Visibility reduction by helicopters NA.

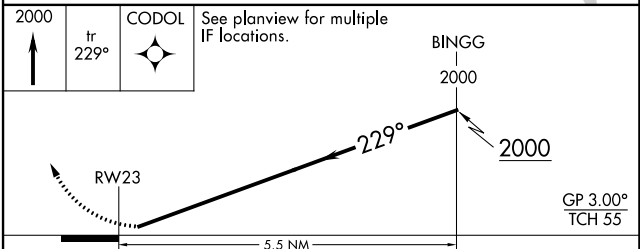
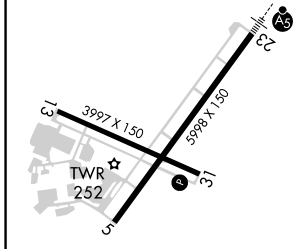


MISSED APPROACH: Climb to 2000 on track 229° to CODOL and hold.

ATIS 124.25	NEW YORK APP CON 127.6 379.9	MORRISTOWN TOWER* 118.1 (CTAF) 353.9	GND CON 134.2	CLNC DEL 128.6
-----------------------	--	--	-------------------------	--------------------------



ELEV 187	TDZE 183
----------	----------



CATEGORY	A	B	C	D
RNP 0.11 DA		553-¾	370 (400-¾)	
RNP 0.30 DA		788-1½	605 (700-1½)	

AUTHORIZATION REQUIRED

NE-2, 15 JUL 2021 to 12 AUG 2021

NE-2, 15 JUL 2021 to 12 AUG 2021