

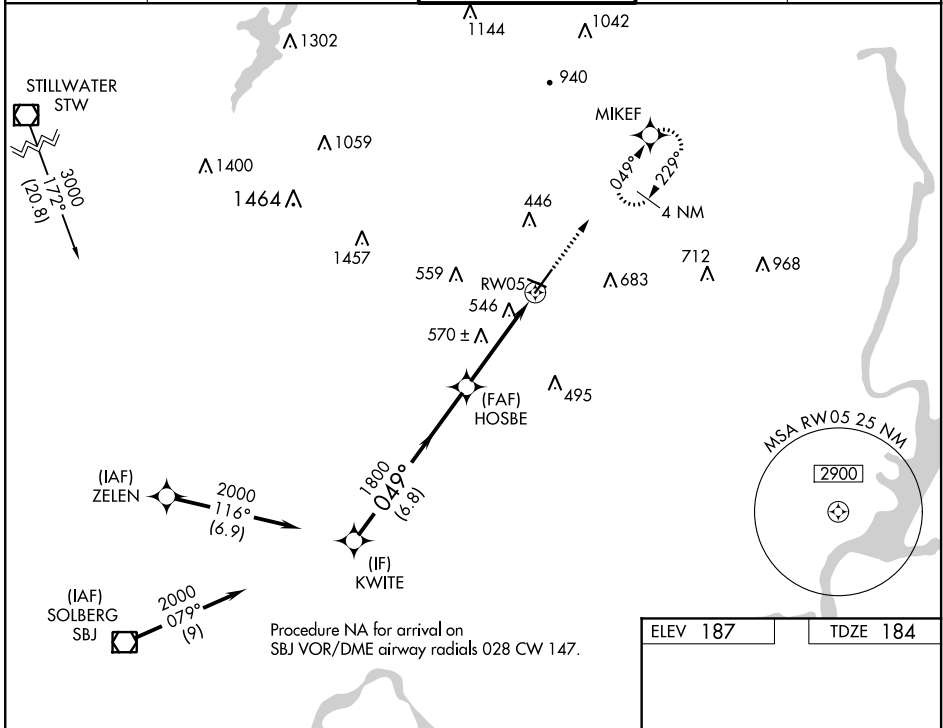
| | | |
|--|------------------------|---|
| WAAS CH 97720 W05A | APP CRS 049° | Rwy Idg 5998 TDZE 184 Apt Elev 187 |
|--|------------------------|---|

RNAV (GPS) RWY 5

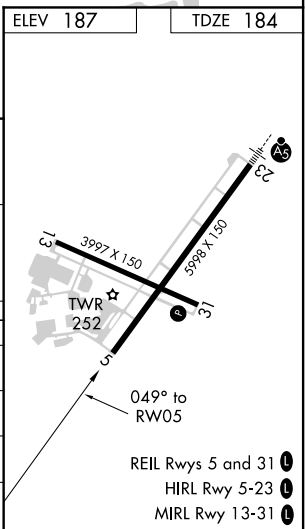
MORRISTOWN MUNI (MMU)

| | |
|--|---|
| RNP APCH. | MISSED APPROACH: Climb to 2500 direct MIKEF and hold, continue climb-in-hold to 2500. |
| <p>▼ Rwy 5 helicopter visibility reduction below 3/4 SM NA.</p> <p>▲ For uncompensated Baro-VNAV systems, procedure NA below -15°C or above 46°C. Circling Rwy 13, 31 NA at night.</p> | |

| | | | | |
|-----------------------|--|---|-------------------------|--------------------------|
| ATIS 124.25 | NEW YORK APP CON 127.6 379.9 | MORRISTOWN TOWER* 118.1 (CTAF) 353.9 | GND CON 134.2 | CLNC DEL 128.6 |
|-----------------------|--|---|-------------------------|--------------------------|



| | | | |
|--------------|----------------------|----------------------|---|
| | KWITE | HOSBE | MIKEF |
| | 2000 | 1800 | 2500 |
| | GP 3.50° | 049° | |
| | TCH 59 | 1800 | |
| | 6.8 NM | 2.5 NM | 1.7 NM |
| | *1.7 NM to RW05 | | *LNAV only. |
| CATEGORY | A | B | C |
| LPV DA | | 879-2 | 695 (700-2) |
| LNAV/VNAV DA | | 893-2 | 709 (800-2) |
| LNAV MDA | 880-1 | 696 (700-1) | 880-2 696 (700-2) |
| CIRCLING | 880-1 693 (700-1) | 900-1 713 (800-1) | 1000-2½ 813 (900-2½) 1200-3 1013 (1100-3) |



NE-2, 15 JUL 2021 to 12 AUG 2021

NE-2, 15 JUL 2021 to 12 AUG 2021