

MARYSVILLE, CALIFORNIA

# ILS or LOC Y RWY 15

LOC I-BAB <b>109.5</b>	APCH CRS <b>145°</b>	Rwy Idg <b>12,001</b>
		TDZE <b>113</b>
		Arprt Elev <b>113</b>

AL-771 (USAF)

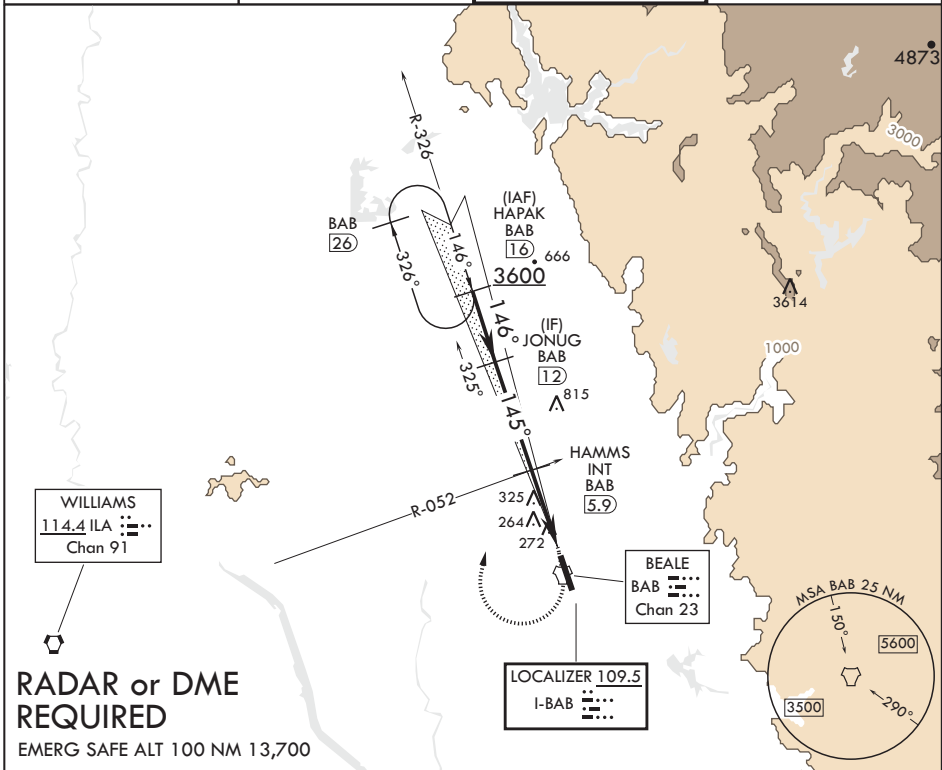
BEALE AFB (KBAB)

**⚠** \* When ALS inop, increase RVR to 40 and vis to 3/4 mile.  
 \*\* When ALS inop, increase CAT AB RVR to 55 and vis to 1 mile, CAT CDE vis to 1 3/8 miles.  
 \*\*\* Circling not authorized E of Rwy 15-33.



**MISSED APPROACH:** Climb to 4400 direct BAB TACAN. Turn right to intercept BAB R-326 to HAPAK and hold, continue climb in hold to 4400.

ATIS* <b>124.55 273.5</b>	NORCAL APP CON <b>125.4 259.1</b>	TOWER* <b>119.4 284.75</b>	GND CON <b>121.6 257.75</b>
------------------------------	--------------------------------------	-------------------------------	--------------------------------



**RADAR or DME REQUIRED**

EMERG SAFE ALT 100 NM 13,700

JONUG (12)	VGSI and glideslope not coincident.	4400	BAB	HAPAK BAB (16)	ELEV 113	TDZE 113
2600	HAMMS ILA R-052 (5.9)	↑ LOC only	↑	↑	145° 4.9NM from FAF	
1600	GS 2.75° TCH 47	↑ 2.6	TACAN	HEGOP (1.5)	127	269
		4.4 NM			12,001 x 300	BCN 240
		0.5			TWR 274	
CATEGORY	A	B	C	D	E	
S-ILS 15*		313/24	200	(200-1/2)		
S-LOC 15**	620/24	507 (600-1/2)	620/55	507 (600-1)		
CIRCLING***	620-1	507 (600-1)	620-1 1/2 507 (600-1 1/2)	680-2 567 (600-2)	840-2 1/2 727 (800-2 1/2)	

HIRL all Rwys

MARYSVILLE, CALIFORNIA

39°08'N - 121°26'W

BEALE AFB (KBAB)

Amdt 5 20JUL17

# ILS or LOC Y RWY 15

SW-2, 15 JUL 2021 to 12 AUG 2021

SW-2, 15 JUL 2021 to 12 AUG 2021