


| | | |
|--|------------------------|---|
| WAAS CH 82202 W15A | APP CRS 155° | Rwy ldg 6224 TDZE 643 Apt Elev 645 |
|--|------------------------|---|

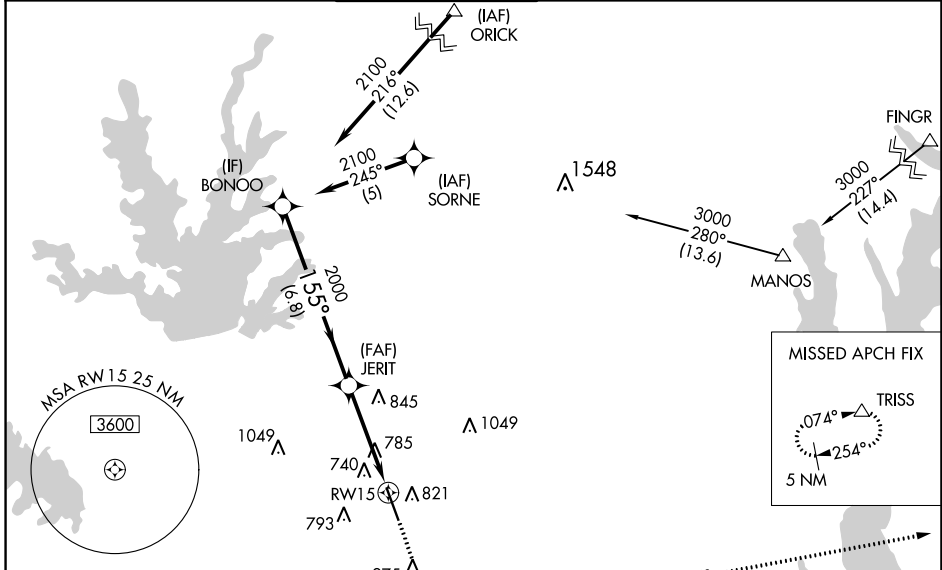
RNAV (GPS) RWY 15

ADDISON (ADS)

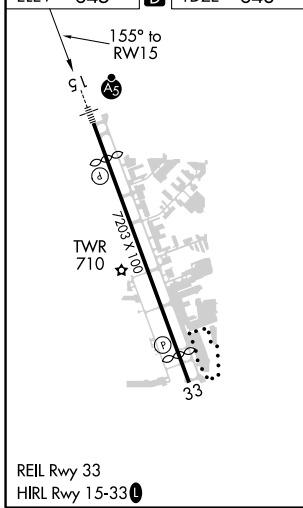
▼ When local altimeter setting not received, use Dallas Love Fld altimeter setting and increase all DA 39 feet and MDA 40 feet, increase LNAV/VNAV all Cats visibility and Circling Cat C visibility 1/4 SM. Inoperative table does not apply to LPV all Cats and LNAV Cats A/B. Baro-VNAV NA when using Dallas Love Fld altimeter setting. For uncompensated Baro-VNAV systems, LNAV/VNAV NA below -16°C (4°F) or above 47°C (117°F). DME/DME RNP-0.3 NA. Helicopter visibility reduction below 1 SM NA. For inoperative MALSR increase LNAV Cat C visibility to 1/4.

MALSR

 MISSED APPROACH: Climb to 3000 direct VEYXE and via 074° track to TRISS and hold.

| | | | | | |
|----------------------|--|--|-------------------------|---------------------------|-------------------------|
| ATIS 133.4 | REGIONAL APP CON 124.3 282.275 | ADDISON TOWER ★ 126.0 (CTAF) 239.0 | GND CON 121.6 | CLNC DEL 119.55 | UNICOM 122.95 |
|----------------------|--|--|-------------------------|---------------------------|-------------------------|



| | | |
|-----------------|----------|-----------------|
| ELEV 645 | D | TDZE 643 |
|-----------------|----------|-----------------|



| | | | | |
|---|--------------------|--------|----------------------------|----------------------------|
| Procedure Turn NA | BONOO | 3000 | VEYXE | TRISS |
| 2100 | 155° | JERIT | tr 074° | △ |
| VGSI and RNAV glidepath not coincident (VGSI Angle 3.00/TCH 60). GP 3.00° TCH 52 | | | | |
| 6.8 NM | | 4.1 NM | | |
| CATEGORY | A | B | C | D |
| LPV DA | 943-1 300 (300-1) | | | |
| LNAV/VNAV DA | 1076-1 433 (500-1) | | | |
| LNAV MDA | 1100-1 457 (500-1) | | | |
| C CIRCLING | 1200-1 555 (600-1) | | 1280-1 3/4 635 (700-1 3/4) | 1400-2 1/2 755 (800-2 1/2) |

SC-2, 15 JUL 2021 to 12 AUG 2021

SC-2, 15 JUL 2021 to 12 AUG 2021