

WAAS CH 72737 W17A	APP CRS 175°	Rwy ldg 6844 TDZE 1291 Apt Elev 1300
---------------------------------	------------------------	---

RNAV (GPS) RWY 17L

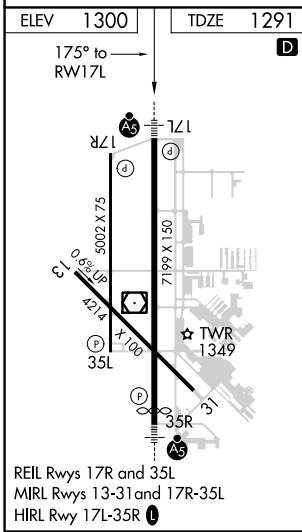
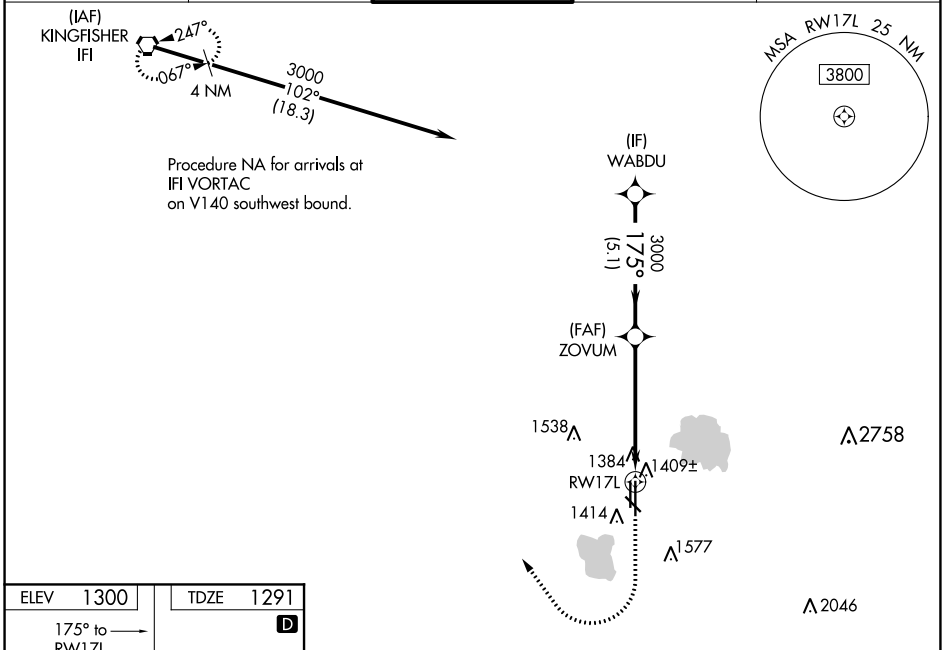
WILEY POST (PWA)

Baro-VNAV NA when using Will Rogers World altimeter setting. For uncompensated Baro-VNAV systems, LNAV/VNAV NA below -13°C (9°F) or above 54°C (130°F). When local altimeter setting not received, use Will Rogers World altimeter setting: Increase all DA 21 feet and all MDA 40 feet. Increase LNAV/VNAV all Cats visibility 1/8 mile and LNAV Cat C/D and Circling Cat C visibility 1/2 mile. DME/DME RNP-0.3 NA. VDP NA when using Will Rogers World altimeter setting.



MISSED APPROACH:
Climb to 1700 then climbing right turn to 3400 direct IFI VORTAC and hold.

ATIS 128.725	OKE CITY APP CON 124.6 266.8	WILEY POST TOWER ★ 126.9 (CTAF) 306.9	GND CON 121.7	UNICOM 122.95
------------------------	--	--	-------------------------	-------------------------



VGSI and RNAV glidepath not coincident (VGSI Angle 3.00/TCH 47).

WABDU	ZOVUM	3400	IFI	
3000	3000	1700	↑	
GP 3.00°	3000	3400	↘	
TCH 54	5.1 NM	4.2 NM	⬡	
		1 NM		
CATEGORY	A	B	C	D
LPV DA		1491-1/2	200 (200-1/2)	
LNAV/VNAV DA		1590-1/2	299 (300-1/2)	
LNAV MDA	1660-1/2	369 (400-1/2)	1660-5/8	369 (400-5/8)
C CIRCLING	1780-1	480 (500-1)	1880-1/2	1880-2
			580 (600-1/2)	580 (600-2)

*LNAV only.
*1 NM to RWY 17L

SC-1, 15 JUL 2021 to 12 AUG 2021

SC-1, 15 JUL 2021 to 12 AUG 2021