


WAAS CH 90299 W20A	APP CRS 196°	Rwy Idg TDZE 6527 1194 Apt Elev 1194
--	------------------------	---

RNAV (GPS) RWY 20

WALLA WALLA RGNL (ALW)

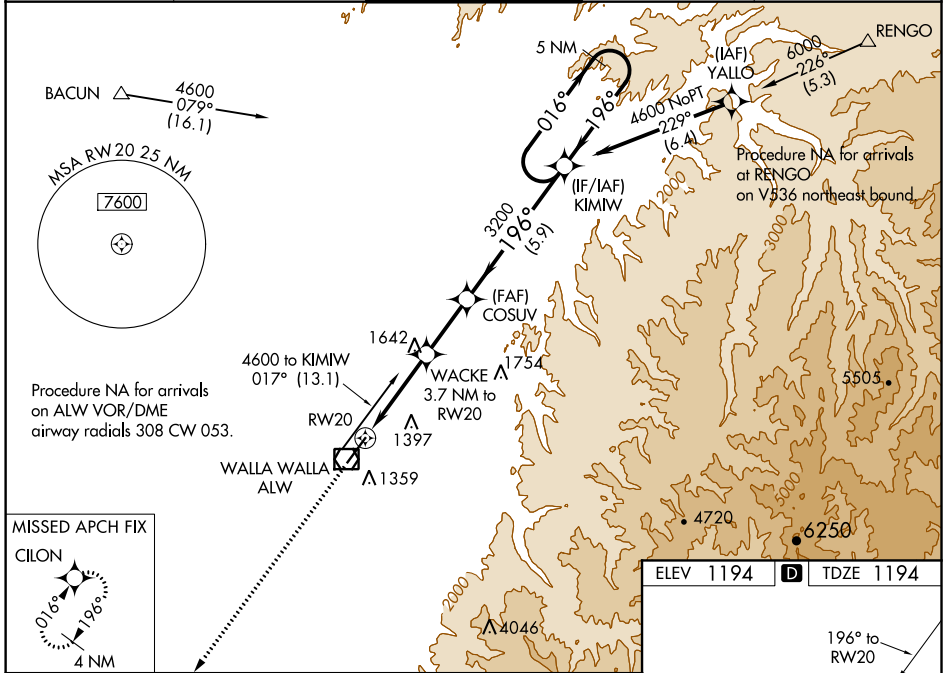
⚠ For uncompensated Baro-VNAV systems, LNAV/VNAV NA below -11°C (13°F) or above 54°C (130°F). DME/DME RNP-0.3 NA. When local altimeter setting not received, use Pendleton altimeter setting and increase all DAs/MDAs 120 feet and increase LPV RVR to 2800, LNAV/VNAV visibilities to 1½ miles, and LNAV Cat A RVR to 6000. VDP and Baro-VNAV NA when using Pendleton altimeter setting. For inoperative MALSR when using Pendleton altimeter setting, increase LPV all Cats visibility to 1 and LNAV Cat A to 1¼. # RVR 1800 authorized with use of FD or AP or HUD to DA, NA when using Pendleton altimeter setting.

MALSR




MISSED APPROACH:
Climb to 4000 direct
CILON and hold.

ASOS 135.875	CHINOOK APP CON ★ 133.15 379.15	WALLA WALLA TOWER ★ 118.5 (CTAF) 289.4	GND CON 121.6 289.4	UNICOM 122.95
------------------------	---	--	-------------------------------	-------------------------



MISSED APCH FIX
CILON

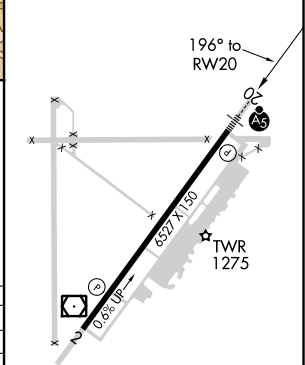


4000 CILON

*LNAV only. *2.9 NM to RW20

GP 3.00°
TCH 50

ELEV 1194	TDZE 1194
-----------	-----------



4000 CILON	WACKE 3.7 NM to RW20	COSUV 3200	KIMIW 5 NM Holding Pattern	4600
	2420*	3200	196°	196°
	2.9 NM	0.8 NM	2.4 NM	5.9 NM

CATEGORY	A	B	C	D
LPV DA#		1394/24	200 (200-½)	
LNAV/VNAV DA		1773-1½	579 (600-1½)	
LNAV MDA	2160/40 966 (1000-¾)	2160/55 966 (1000-1)	2160-2½	966 (1000-2½)
CIRCLING	2160-1¼ 966 (1000-1¼)	2160-1½ 966 (1000-1½)	2160-3 966 (1000-3)	2300-3 1106 (1200-3)

REIL Rwy 20
HIRL Rwy 2-20

NW-1, 15 JUL 2021 to 12 AUG 2021

NW-1, 15 JUL 2021 to 12 AUG 2021