

# BURRO FOUR DEPARTURE (RNAV)

AL-430 (FAA)

TUCSON INTL (TUS)  
TUCSON, ARIZONA

SW-4, 15 JUL 2021 to 12 AUG 2021

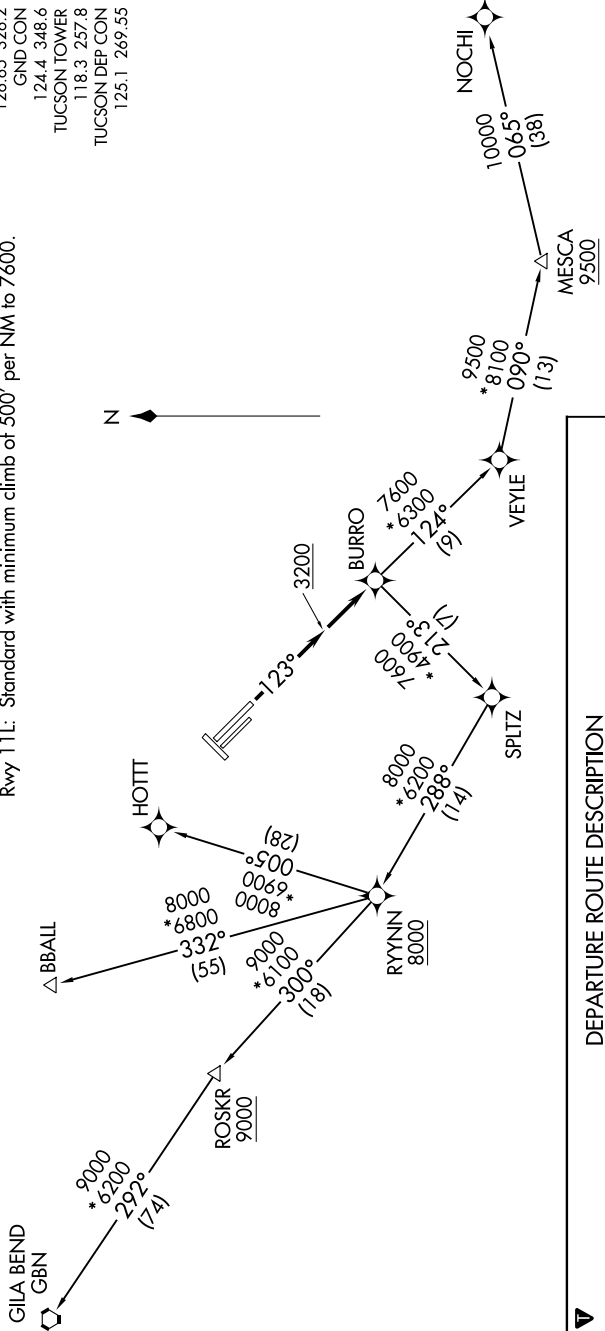
**TOP ALTITUDE:**  
17000

### TAKEOFF MINIMUMS

Rwys 3, 11R, 21, 29L, 29R: NA - ATC.

Rwy 11L: Standard with minimum climb of 500' per NM to 7600.

ATIS 123.8 279.65  
CLNC DEL 126.65 326.2  
GND CON 124.4 348.6  
TUCSON TOWER 118.3 257.8  
TUCSON DEP COIN 125.1 269.55



**DEPARTURE ROUTE DESCRIPTION**

**TAKEOFF RUNWAY 11L:** Climb heading 123° to 3200 MSL, then direct BURRO, thence . . .

. . . via (transition) maintain 17000, expect filed altitude 10 minutes after departure.

**BBALL TRANSITION (BURRO4.BBALL)**  
**GILA BEND TRANSITION (BURRO4.GBN)**  
**HOTT TRANSITION (BURRO4.HOTT)**  
**NOCHI TRANSITION (BURRO4.NOCHI)**

NOTE: GPS required.  
NOTE: RNAV 1.  
NOTE: Chart not to scale.

SW-4, 15 JUL 2021 to 12 AUG 2021