

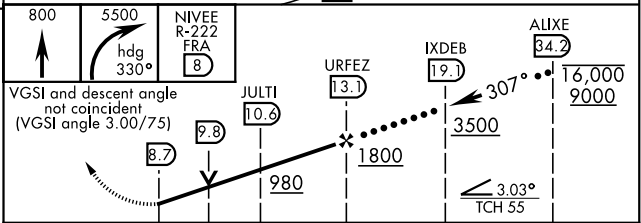
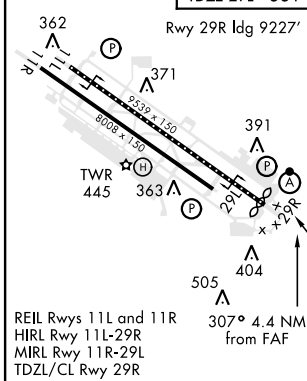
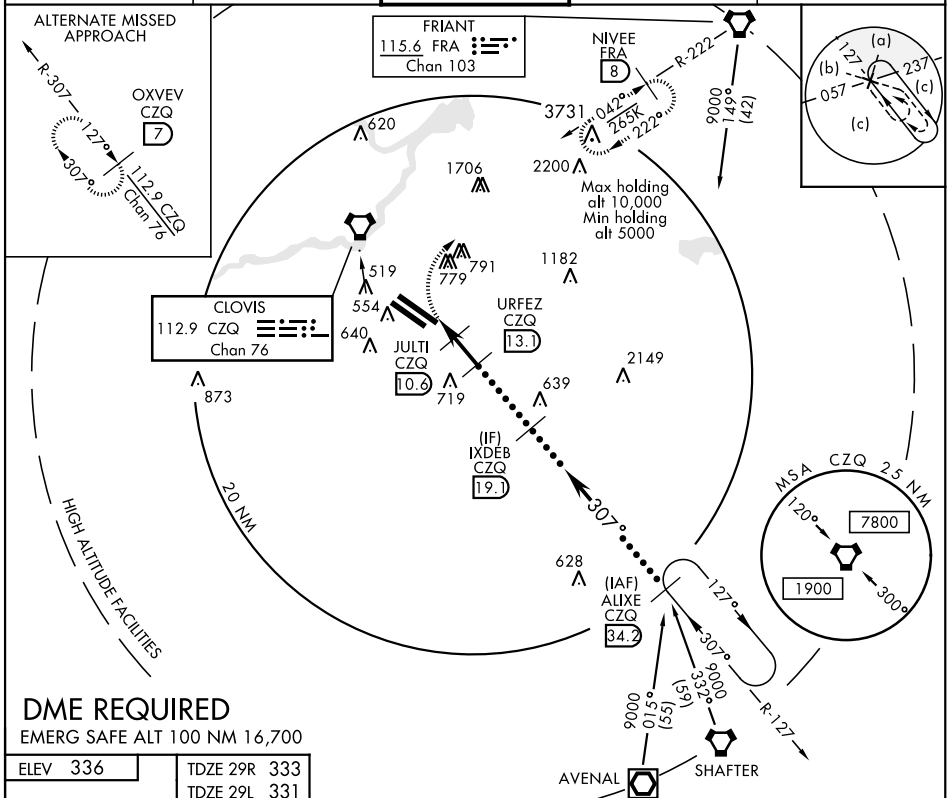
VORTAC CZQ 112.9 Chan 76	APCH CRS 307°	Rwy Idg 29R 9227 29L 8008	29L TDZE 333 331
		Arprt Elev 336	

JAL-162 [USAF] FRESNO YOSEMITE INTL (KFAT)

ALSF-2 MISSED APPROACH: Climb to 800 then climbing right turn to 5500 on heading 330° and FRA VORTAC R-222 to NIVEE INT/FRA 8 DME and hold, continue climb-in-hold to 5500.

* When ALS inop, increase CAT CDE vis to 1¼ miles.

ATIS 121.35 273.6	FRESNO APP CON 132.35 323.25	FRESNO TOWER 118.2 251.1	GND CON 121.7 348.6	CLNC DEL 124.35 348.6
-----------------------------	----------------------------------------	------------------------------------	-------------------------------	---------------------------------



CATEGORY	C	D	E
S-29R *	760/40	427	(500-¾)
SIDESTEP 29L	760-1½ 429 (500-1½)	760-2	429 (500-2)
CIRCLING	920-1½	920-2	1140-2¾
	584 (600-1½)	584 (600-2)	804 (900-2¾)

SW-2, 15 JUL 2021 to 12 AUG 2021

SW-2, 15 JUL 2021 to 12 AUG 2021