

WAAS CH <b>97508</b> <b>W36A</b>	APP CRS <b>002°</b>	Rwy Idg TDZE <b>25</b> Apt Elev <b>25</b>	<b>3199</b>
--	------------------------	---	-------------

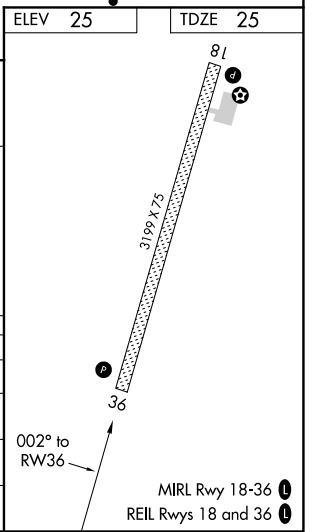
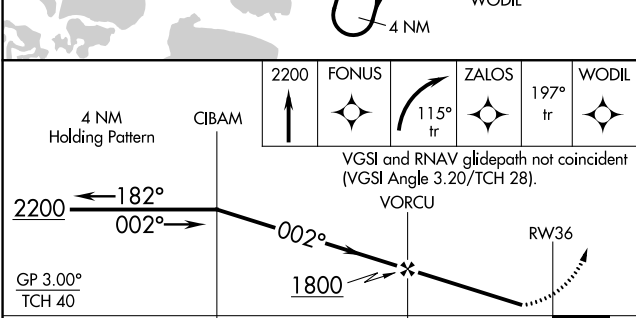
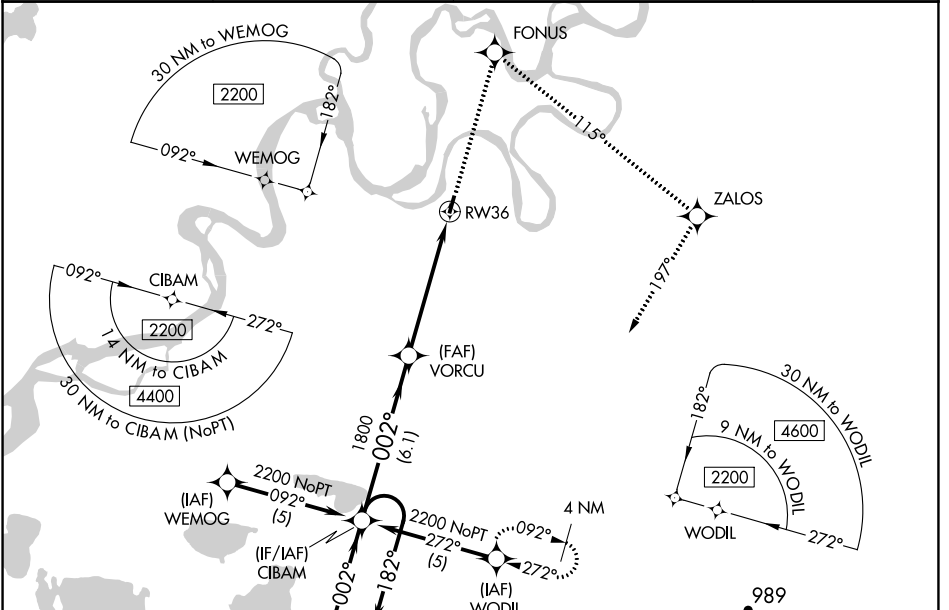
# RNAV (GPS) RWY 36

KWETHLUK (KWT) (PFKW)

**Baro-VNAV NA.**  
**DME/DME RNP-0.3 NA.**  
**When local altimeter setting not received use Bethel altimeter setting.**  
**Rwy 36 helicopter visibility reduction below ¾ SM NA.**

**MISSED APPROACH:** Climb to 2200 direct FONUS and right turn via 115° track to ZALOS and via 197° track to WODIL and hold.

AWOS-3P <b>120.0</b>	BET/PABE ASOS <b>135.45</b>	ANCHORAGE CENTER <b>125.2 372.0</b>	CTAF <b>122.9 0</b>
-------------------------	--------------------------------	--	------------------------



CATEGORY	A	B	C	D
LPV DA		695-2½	670 (700-2½)	
LNAV/VNAV DA		733-2½	708 (800-2½)	
LNAV MDA	620-1	595 (600-1)	620-1½ 595 (600-1½)	620-1¾ 595 (600-1¾)
CIRCLING	680-1	655 (700-1)	680-1¾ 655 (700-1¾)	680-2 655 (700-2)

AK, 17 JUN 2021 to 12 AUG 2021

AK, 17 JUN 2021 to 12 AUG 2021