

WAAS CH 93628 W25A	APP CRS 254°	Rwy Idg TDZE Apt Elev	5000 1122 1122
--	------------------------	-----------------------------	---

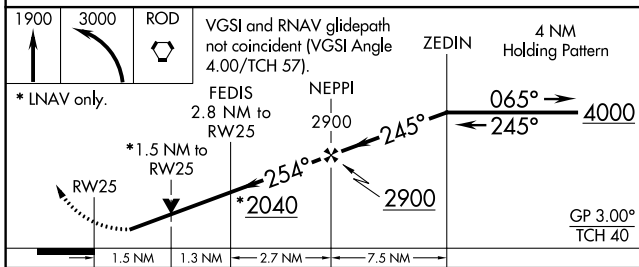
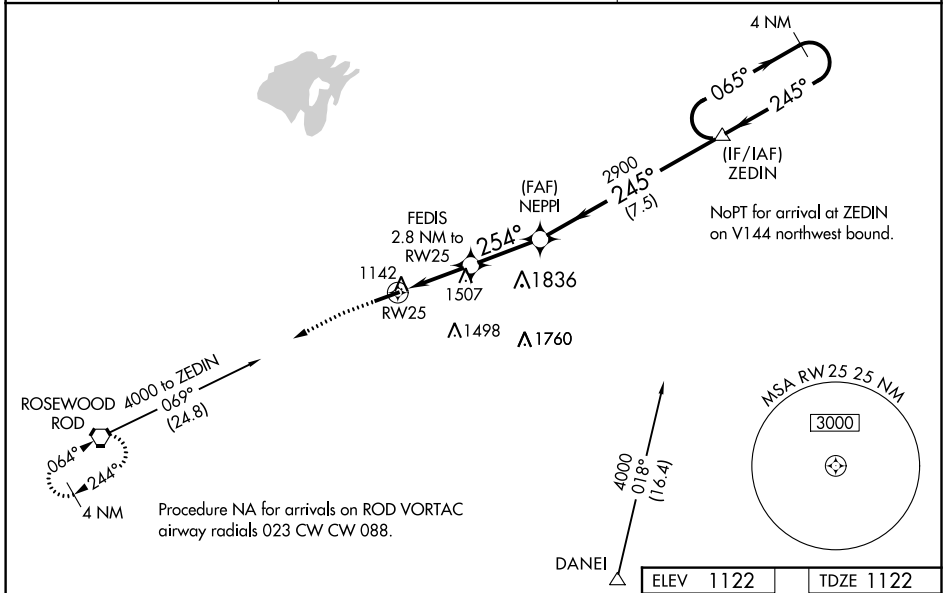
RNAV (GPS) RWY 25

BELLEFONTAINE RGNL (E.D.J)

⚠ NA For uncompensated Baro-VNAV systems, LNAV/VNAV NA below -17°C (2°F) or above 36°C (96°F). DME/DME RNP-0.3 NA. Helicopter visibility reduction below 3/4 SM NA. When local altimeter setting not received, use James M. Cox Dayton Intl altimeter setting and increase all DA 94 feet and increase all MDA 100 feet and increase LPV and LNAV/VNAV visibility all Cats 3/8 mile and increase LNAV Cat B and Circling Cat B visibility 1/4 mile and increase LNAV Cats C and D visibility 1/2 mile and increase Circling Cat C visibility 1/2 mile and increase Circling Cat D visibility 1/4 mile. VDP and Baro-VNAV NA with James M. Cox Dayton Intl altimeter setting.

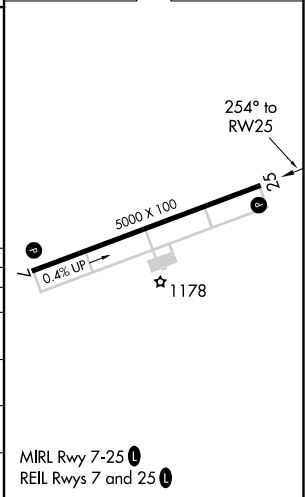
MISSED APPROACH: Climb to 1900 then climbing left turn to 3000 direct ROD VORTAC and hold.

AWOS-3 118.075	COLUMBUS APP CON 118.425 294.5	UNICOM 122.8 (CTAF) 0
--------------------------	--	---------------------------------



ELEV 1122	TDZE 1122
-----------	-----------

CATEGORY	A	B	C	D
LPV DA		1457-1 1/8	335 (400-1 1/8)	
LNAV/VNAV DA		1664-1 7/8	542 (600-1 7/8)	
LNAV MDA	1820-1	698 (700-1)	1820-2	698 (700-2)
CIRCLING	1820-1	698 (700-1)	1860-2 738 (800-2)	1980-2 3/4 858 (900-2 3/4)



EC-2, 17 JUN 2021 to 15 JUL 2021

EC-2, 17 JUN 2021 to 15 JUL 2021