

WAAS CH <b>82042</b> <b>W36A</b>	APP CRS <b>002°</b>	Rwy Idg TDZE Apt Elev	<b>4300</b> <b>1597</b> <b>1607</b>
--	------------------------	-----------------------------	---

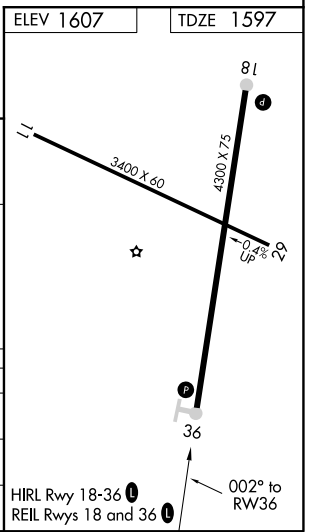
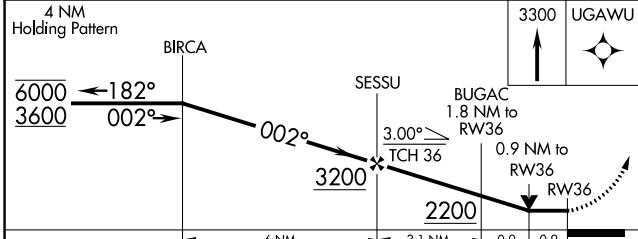
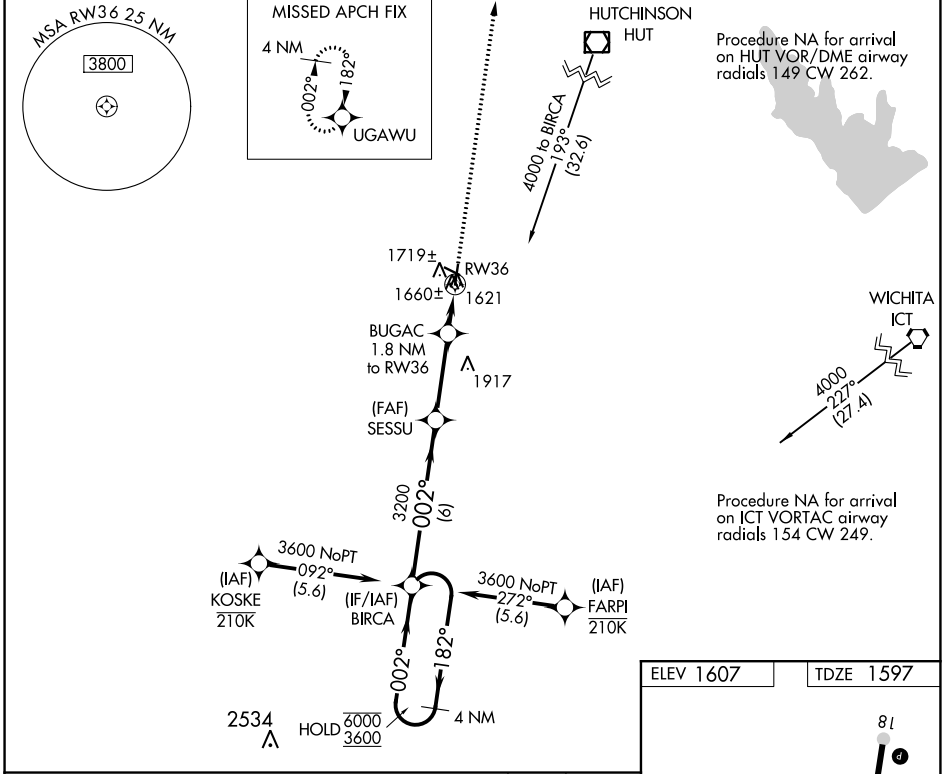
# RNAV (GPS) RWY 36

KINGMAN AIRPORT - CLYDE CESSNA FIELD (9K8)

RNP APCH. MISSED APPROACH: Climb to 3300 direct UGAWU and hold.

▼ Rwy 36 helicopter visibility reduction below 3/4 SM NA. Circling Rwy 11, 29 NA at night.

AWOS-3 <b>119.325</b>	WICHITA APP CON <b>125.5 306.2</b>	UNICOM <b>122.8 (CTAF)</b>
--------------------------	---------------------------------------	-------------------------------



CATEGORY	A	B	C	D
LP MDA	1920-1 323 (400-1)			NA
RNAV MDA	1980-1 383 (400-1)	1980-1 383 (400-1 1/8)		NA
CIRCLING	2040-1 433 (500-1)	2060-1 453 (500-1)	2160-1 553 (600-1 1/2)	NA

NC-2, 17 JUN 2021 to 15 JUL 2021

NC-2, 17 JUN 2021 to 15 JUL 2021