

# TRUUK TWO ARRIVAL (RNAV)

DALLAS-FORT WORTH, TEXAS

REGIONAL APP CON  
 118.1 306.95  
 AFW ATIS  
 126.925  
 FTW ATIS  
 120.7  
 KNFW ATIS ★  
 351.675

NOTE: RADAR required.  
 NOTE: RNAV 1.  
 NOTE: DME/DME/IRU or GPS required.

SASIE  
 VERTICAL NAVIGATION  
 PLANNING INFORMATION

TURBOJETS NORTH FLOW:

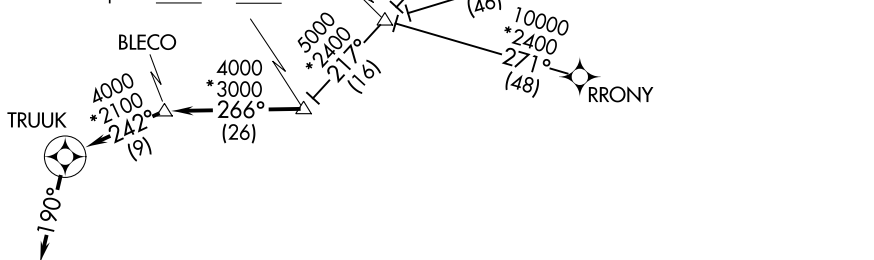
Expect 10000

TURBOJETS SOUTH FLOW:

Expect 11000

PROPS:

Expect 5000 or 6000



## ARRIVAL ROUTE DESCRIPTION

AXxee TRANSITION (AXxee.TRUUK2): (For aircraft filing FL230 and below).

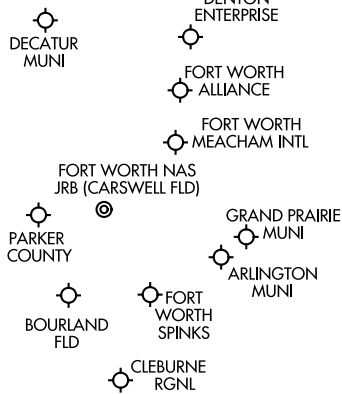
HITUG TRANSITION (HITUG.TRUUK2)

PONY TRANSITION (PONY.TRUUK2)

RRNET TRANSITION (RRNET.TRUUK2)

RRONY TRANSITION (RRONY.TRUUK2): (For aircraft filing FL230 and below).

From SASIE on track 266° to BLECO, then on track 242° to TRUUK, then on track 190°. Expect RADAR vectors to final approach course.



NOTE: Chart not to scale.

# TRUUK TWO ARRIVAL (RNAV)

DALLAS-FORT WORTH, TEXAS

SC-2, 17 JUN 2021 to 15 JUL 2021

SC-2, 17 JUN 2021 to 15 JUL 2021