

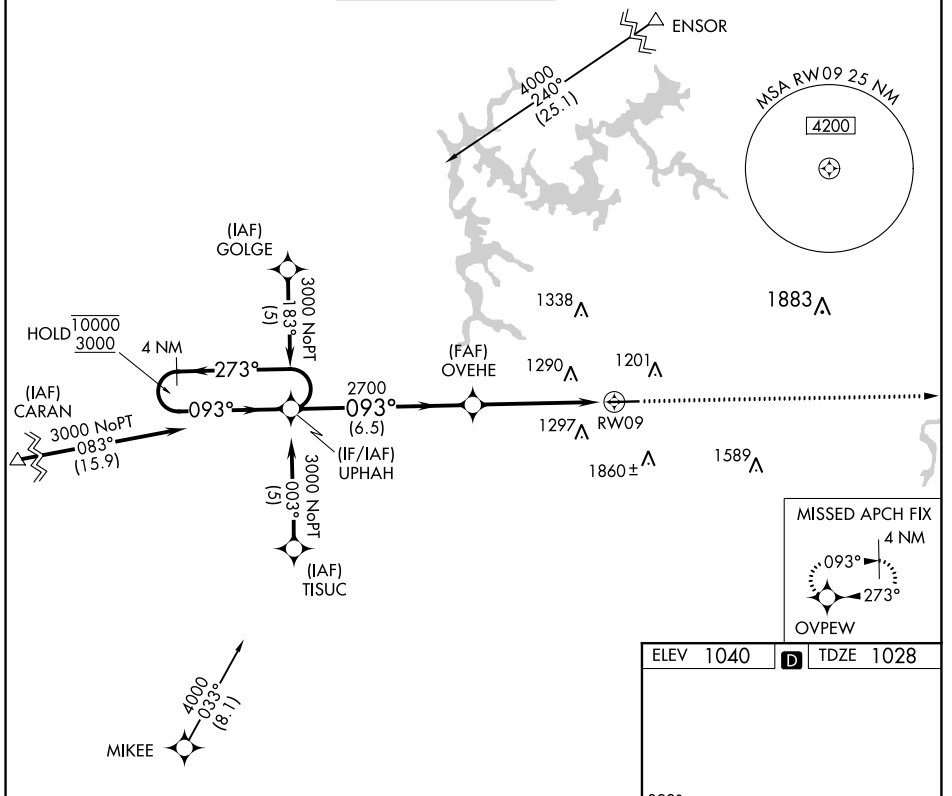
APP CRS 093°	Rwy Idg 5233
	TDZE 1028
	Apt Elev 1040

RNAV (GPS) RWY 9

COBB COUNTY INTL-MCCOLLUM FLD (RYY)

RNP APCH.		MISSED APPROACH: Climb to 3100 direct OVEPEW and hold.			
<p>⚠ Rwy 9 helicopter visibility reduction below 1 SM NA. ⚠ Straight-in Rwy 9 NA at night, Circling Rwy 9 NA at night.</p>					

ATIS 128.125	ATLANTA APP CON 121.0 268.7	MCCOLLUM TOWER ★ 125.9 (CTAF) 0	GND CON 119.0	CLNC DEL 119.0 268.7	UNICOM 122.7
------------------------	---------------------------------------	---	-------------------------	--------------------------------	------------------------



4 NM Holding Pattern UPHAH		Visual Segment - Obstacles.		3100	OVEPEW	093° to RW09
10000 ← 273° 3000 → 093°		OVEHE		↑	✦	TWR 1168 6295 X 100 → 0.7% UP
		2700		RW09		
		6.5 NM		5.1 NM		
CATEGORY	A	B	C	D		
LNVA MDA	1560-1	532 (600-1)	1560-1½	532 (600-1½)		
CIRCLING	1780-1	740 (800-1)	1780-2 740 (800-2)	2220-3 1180 (1200-3)		

HIRL Rwy 9-27 **0**

SE-4, 17 JUN 2021 to 15 JUL 2021

SE-4, 17 JUN 2021 to 15 JUL 2021