

WAAS CH 69431 W05A	APP CRS 049°	Rwy Idg TDZE 5254 166 Apt Elev 166
--	------------------------	--

RNAV (GPS) RWY 5

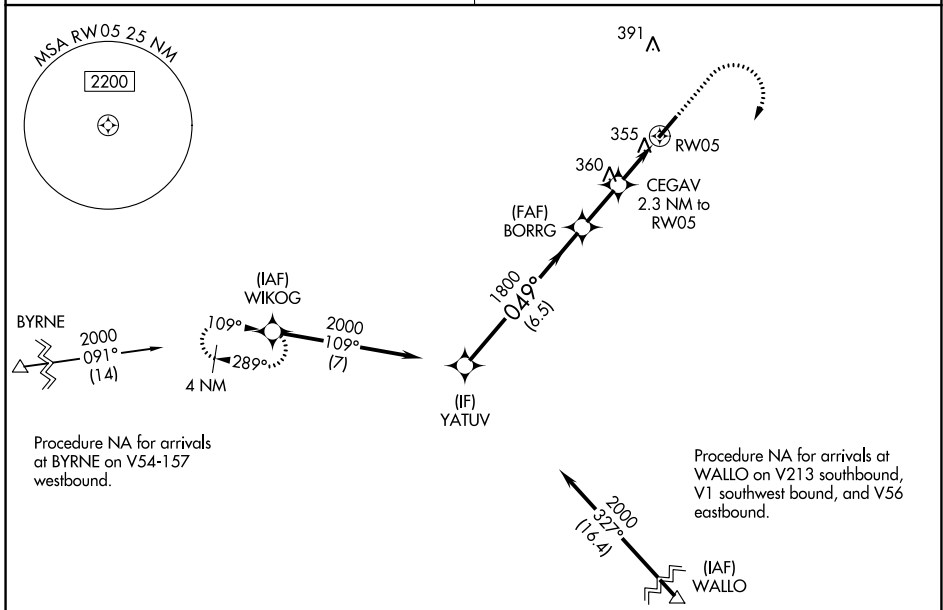
MOUNT OLIVE MUNI (W40)

NA DME/DME RNP-0.3 NA. Rwy 5 helicopter visibility reduction below 3/4 SM NA. Obtain Seymour-Johnson AFB altimeter setting on CTAF; when not received, use Duplin Co altimeter setting and increase LPV DA to 634 and all MDA 20 feet.

MISSED APPROACH: Climb to 900 then climbing right turn to 2000 direct WIKOG and hold.

SEYMOUR JOHNSON APP CON ★
119.7 273.6

UNICOM
122.8 (CTAF)



SE-2, 17 JUN 2021 to 15 JUL 2021

SE-2, 17 JUN 2021 to 15 JUL 2021

	ELEV 166	TDZE 166		
	VGSI and RNAV glidepath not coincident (VGSI Angle 3.50/TCH 43). YATUV 2000 049° BORRG 1800 CEGAV 2.3 NM to RW05 RW05 *1060 GP 3.45° TCH 60 *LNNAV only.			
CATEGORY	A	B	C	D
LPV DA	625-1 3/8		459 (500-1 3/8)	NA
LNNAV MDA	640-1	474 (500-1)	640-1 3/8 474 (500-1 3/8)	NA
CIRCLING	700-1	534 (600-1)	700-1 1/2 534 (600-1 1/2)	NA

MIRL Rwy 5-23