

WAAS CH 90331 W23A	APP CRS 229°	Rwy Idg TDZE 166 Apt Elev 166	5000 166 166
--	------------------------	---	---

RNAV (GPS) RWY 23

MOUNT OLIVE MUNI (W40)

⚠ DME/DME RNP-0.3 NA. Rwy 23 helicopter visibility reduction below $\frac{3}{4}$ SM NA. Obtain Seymour-Johnson altimeter setting on CTAF; when not received, use Duplin Co altimeter setting and increase LPV DA to 461, and all MDA 20 feet, increase LNAV Cat C visibility $\frac{1}{8}$ mile.

MISSED APPROACH: Climb to 700 then climbing right turn to 2000 direct WIKOG and hold.

SEYMOUR JOHNSON APP CON ★
119.7 273.6

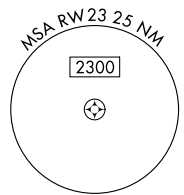
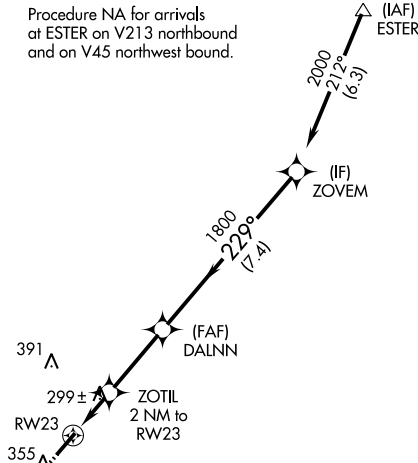
UNICOM
122.8 (CTAF) 0

MISSED APCH FIX

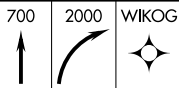
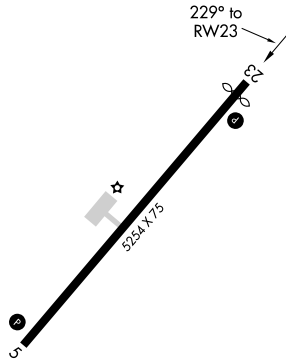


Procedure NA for arrivals at ESTER on V213 northbound and on V45 northwest bound.

1148
▲

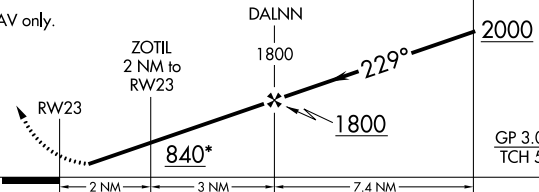


ELEV 166	TDZE 166
----------	----------



VGSI and RNAV glidepath not coincident (VGSI Angle 3.50/TCH 43).

*LNAV only.



CATEGORY	A	B	C	D
LPV DA	452-1 286 (300-1)			NA
LNAV MDA	580-1	414 (500-1)	580- $\frac{1}{8}$ 414 (500- $\frac{1}{8}$)	NA
CIRCLING	700-1	534 (600-1)	700- $\frac{1}{2}$ 534 (600- $\frac{1}{2}$)	NA

MIRL Rwy 5-23 0